

REGULATOR CATALOG



Gilmore

Gilmore produces the most reliable flow control solutions across the globe, even in extreme environments, we provide solutions with optimal performance in both surface and subsea applications.

Gilmore continues to demonstrate precision in performance and reliability with this line of pressure regulator valves by improving cycle life and performance.



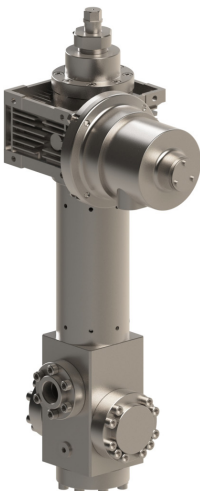
1" 6ksi GEN2 Pressure Regulator | Manual Spring

- Connections
NPT / SAE / Code 62 / Seal-sub Mounted
- Set Point Pressure
500-1,500 psi
1,000-2,500 psi
1,500-3,500 psi
2,000-4,500 psi
2,500-5,500 psi
- Max Flow Capacity
Single Inlet: 125 GPM
Dual Inlets: 250 GPM



1" 6ksi GEN2 Pressure Regulator | Hydraulic Pilot

- Connections
NPT / SAE / Code 62 / Seal-sub Mounted
- Set Point Pressure
300-5,000 psi
- Max Flow Capacity
Single Inlet: 150 GPM
Dual Inlets: 300 GPM



1" 6ksi GEN2 Pressure Regulator | Air Motor

- Connections
NPT / SAE / Code 62
- Set Point Pressure
500-1,500 psi
1,500-3,500 psi
2,000-4,500 psi
2,500-5,500 psi
- Max Flow Capacity
Single Inlet: 125 GPM
Dual Inlets: 250 GPM



1" 6ksi GEN2 Pressure Regulator | Compensator

- Connections
SAE
- Set Point Pressure
1,500-3,500 psi
- Max Flow Capacity
Dual Inlets: 250 GPM



1/4" 15ksi Surface Compact Pressure Regulator

- Connections
NPT / Others Available upon Request
- Set Point Pressure
3,000-10,000 psi
Others Available upon Request
- Max Flow Capacity
Single Inlet: 4 GPM
Others Available upon Request



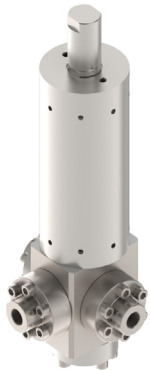
1/4" 15ksi Subsea Compact Pressure Regulator

- Connections
NPT / Others Available upon Request
- Set Point Pressure
3,000-9,000 psi
Others Available upon Request
- Max Flow Capacity
Single Inlet: 4 GPM
Others Available upon Request



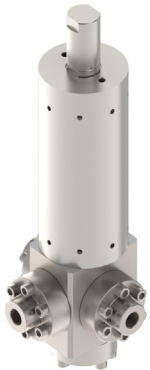
1" 10ksi GEN2 Damping Pressure Regulator | Manual

- Connections
SAE/MP
- Set Point Pressure
2,000-3,500 psi
3,000-5,500 psi
- Max Flow Capacity
Single Inlet: 65-85 GPM
Dual Inlets: 130-170 GPM



1/2" 6ksi GEN2 Damping Pressure Regulator | Manual Spring

- Connections
SAE
- Set Point Pressure
3,000-5,000 psi
- Max Flow Capacity
Single Inlet: 25 GPM



1/2" 10ksi GEN2 Damping Pressure Regulator | Manual Spring

- Connections
MP
- Set Point Pressure
3,000-6,000 psi
4,000-8,000 psi
- Max Flow Capacity
Single Inlet: 25 GPM



1/2" 10ksi GEN2 Damping Pressure Regulator | Hydraulic Pilot

- Connections
MP
- Set Point Pressure
1,000-8,000 psi
- Max Flow Capacity
Single Inlet: 25 GPM

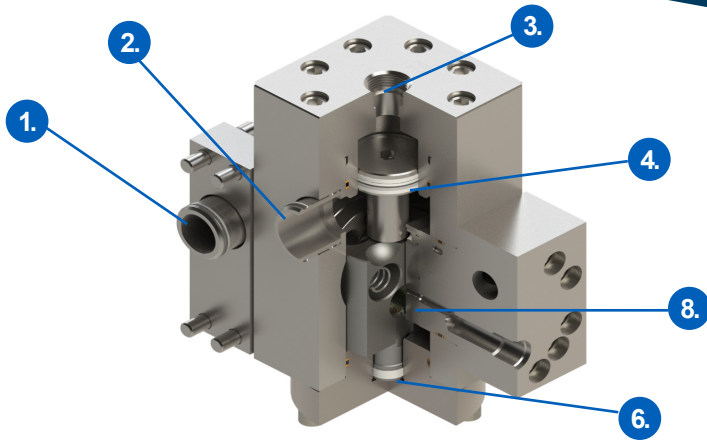


Figure 1: Hydraulic Pilot Dual Inlet Pressure Regulator

Gilmore's pressure regulators are the ideal solution for maintaining and limiting downstream pressure. Hardened stainless steel or Tungsten Carbide shear seals are precision lapped to provide a resilient seal and develop a wiping action that resists contamination and leaking.

- 1. Supply Pressure** – The maximum inlet pressure the regulator is designed for.
- 2. Regulated Pressure** – The downstream pressure the regulator sustains to supply or vent hydraulic fluid.
- 3. Set Point Range** – The lowest and highest regulated pressure the valve can achieve. The set point is typically determined by the size of the spring or ratio of the hydraulic plunger.
- 4. Deadband** – The difference in pressure for the regulator to overcome the static friction between the closed, open, and venting positions.
- 5. Lowest Regulated Pressure** – The minimum pressure outside of the set point range in which the regulator will still function. The capacity of the regulator maybe diminished at this point.
- 6. Hydraulic Damping** – Patented feature of the regulator that reduces dynamic instability. (Chattering)
- 7. Auxiliary Connections** – Ports in the regulator that allow for gauge pressure installation or additional accumulated volume.
- 8. Refined Tungsten Carbide Trim** – Patented technology that reduces the amount of tungsten carbide used in the regulator therefore, reduces costs.

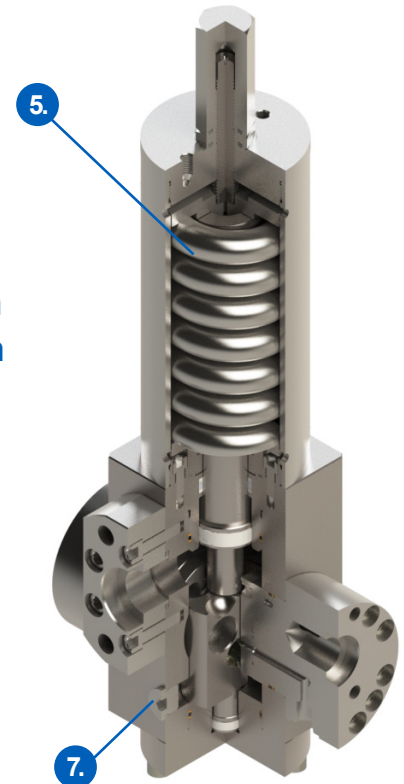
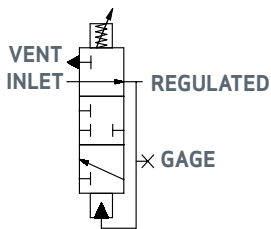


Figure 2: Manual Spring Pressure Regulator

Single Inlet
6,000 psi Supply
500-1,500 psi Regulated



Available Configurations:
NPTF, SAE

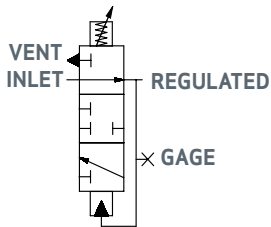
FUNCTIONAL DESIGN SPECIFICATION

Maximum Inlet Pressure Pressure	6,000 psi
Fully Open Flow Coefficient (Cv) Regulated	7
Fully Open Flow Coefficient (Cv) Vent	1
Set Point Range	500-1500 psi
Typical Deadband at 5,000 psi Supply	300 ± 100 psi
Typical Deadband at 3,000 psi Supply	200 ± 50 psi
Fully Open Max Regulated Flow Rate	125 GPM
Predicted Cycle Life	10,000 Cycles
Operating Temperature Range	32° F to 150° F
Storage Temperature Range	32° F to 150° F
Acceptable Operating Fluid Types	Water or mineral oil-based control fluid
Mounting Restrictions	None
US Patent	10,739,796

BILL OF MATERIALS

Item Number*	Description	Material
1	BODY	A564 TP 630 (17-4 PH)
2	FLANGE, 1" NPTF INLET, 1/2" NPTF VENT	A276 TP 316
3	FLANGE, 1" NPTF	A276 TP 316
4	FLANGE, BOTTOM, 3/8" SAE	A276 TP 316
5	GUIDE, PLUNGER, 1-1/2"	A276 TP 316
6	ADAPTER, SPRING HOUSING	A276 TP S21800 (NITRONIC 60)
7	SPRING HOUSING	A276 TP 316
8	CAP, SPRING HOUSING	A276 UNS S21800 (NITRONIC 60)
9	NUT, O-LOCK	A276 TP 316
10	CAP, LOCK	A276 TP 316
11	INSERT, FLOW PORT, BLANK	TUNGSTEN CARBIDE / NICKEL

Single Inlet
6,000 psi Supply
500-1,500 psi Regulated

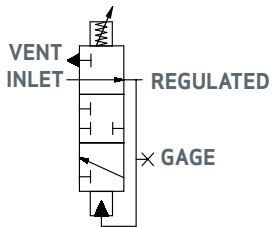


Available Configurations:
NPTF, SAE

BILL OF MATERIALS (CONT.)

Item Number*	Description	Material
12	INSERT, FLOW PORT, SUPPLY & VENT	TUNGSTEN CARBIDE / NICKEL
13	CARRIER, SEAL	A276 TP S21800 (NITRONIC 60)
14	PLUNGER, 1-1/2"	A276 TP S21800 (NITRONIC 60)
15	RING, SEAL, SUPPLY	TUNGSTEN CARBIDE / NICKEL
16	RING, SEAL, VENT	TUNGSTEN CARBIDE 8-10% NICKEL
17	WAVE SPRING	AMS5699 (X-750)
18	SPRING, COMPRESSION	AMS5699 (X-750)
19	SCREW, ADJUSTING	F593 GR2 (T316)
20	PLATE, SPRING	A276 TP 316
21	PLUG, HEX, 3/8" SAE	A240 TP 316
22	PELLET, NYLOK	NYLON
23	HOLLOW HEX PLUG, 1/2" SAE	A240 TP 316
24	RING, BACKUP	PEEK
25	WIPER, D-STYLE, 1.500 PLUNGER	POLYURETHANE
26	FLANGE, BLANK	A276 TP 316
27	WEAR BAND, PLUNGER, 1-1/2"	DELRIN AF
28	SHCS, THREAD-LOCKING, 1/4-20 UNC X 1/2" LONG	A593 T316 (& NYLON)
29	SHCS, 3/8-16 UNC X 1-1/2 LG	A286 GR 660
30	SHCS, 3/8-16 UNC X 1.25 LG	A286 GR 660
31	SHCS, 5/16-18 UNC X 3/4" LG	A286 GR 660
32	O-RING	HNBR
33	O-RING	HNBR
34	O-RING	HNBR
35	O-RING	HNBR
36	O-RING	HNBR
37	O-RING	HNBR

Single Inlet
6,000 psi Supply
500-1,500 psi Regulated



Available Configurations:
NPTF, SAE

BILL OF MATERIALS (CONT.)

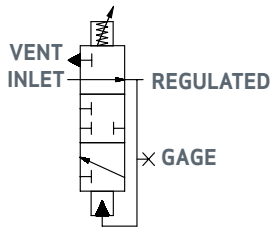
Item Number*	Description	Material
38	RING, BACKUP	PEEK
39	RING, BACKUP	PEEK
40	RING, BACKUP	PEEK
41	O-RING	HNBR
42	WEAR BAND, SEAL CARRIER	DELRIN AF
43	T-SEAL, ROD	CARBOXYLATED NITRILE / NYLATRON
44	RING, BACKUP	PEEK
45	SPRING, COMPRESSION	AMS5670 (X-750)
46	BALL	A276 TP 316

Part Number	Description
29095	Valve, Pressure Regulator, GEN2, Manual Spring, 500-1500 psi range, NPT Ports, Single Inlet

*The repair kit part number will match the category part number with (RK) at the end.

*The seal kit part number will match the category part number with (SK) at the end.

Single Inlet
6,000 psi Supply
1,000-2,500 psi Regulated



Available Configurations:
SAE

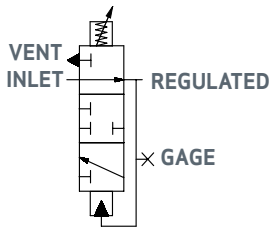
FUNCTIONAL DESIGN SPECIFICATION

Maximum Inlet Pressure Pressure	6,000 psi
Fully Open Flow Coefficient (Cv) Regulated	7
Fully Open Flow Coefficient (Cv) Vent	1
Set Point Range	1000-2500 psi
Typical Deadband at 5,000 psi Supply	300 ± 100 psi
Typical Deadband at 3,000 psi Supply	200 ± 50 psi
Fully Open Max Regulated Flow Rate	125 GPM
Predicted Cycle Life	10,000 Cycles
Operating Temperature Range	32 °F to 150 °F
Storage Temperature Range	32 °F to 150 °F
Acceptable Operating Fluid Types	Water or mineral oil-based control fluid
Mounting Restrictions	None
US Patent	10,739,796

BILL OF MATERIALS

Item Number*	Description	Material
1	BODY	A564 TP 630 (17-4 PH)
2	FLANGE, 1" SAE INLET, 1/2" SAE VENT	A276 TP 316
3	FLANGE, 1" SAE REGULATED	A276 TP 316
4	FLANGE, BOTTOM	A276 TP 316
5	GUIDE, PLUNGER, 1-1/2"	A276 TP 316
6	ADAPTER, SPRING HOUSING	A276 TP S21800 (NITRONIC 60)
7	SPRING, HOUSING	A511 MT 316/316L
8	CAP, SPRING HOUSING	A276 UNS S21800 (NITRONIC 60)
9	NUT, O-LOCK	A276 TP 316
10	CAP, LOCK	A276 TP 316
11	INSERT, FLOW PORT, BLANK	TUNGSTEN CARBIDE / NICKEL

Single Inlet
6,000 psi Supply
1,000-2,500 psi Regulated

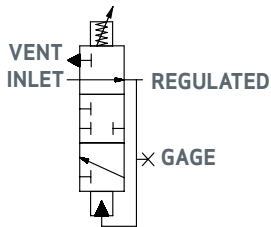


Available Configurations:
SAE

BILL OF MATERIALS (CONT.)

Item Number*	Description	Material
12	INSERT, FLOW PORT, SUPPLY & VENT	TUNGSTEN CARBIDE / NICKEL
13	CARRIER, SEAL	A276 TP S21800 (NITRONIC 60)
14	PLUNGER, 1-1/2"	A276 TP S21800 (NITRONIC 60)
15	RING, SEAL, SUPPLY	TUNGSTEN CARBIDE / NICKEL
16	RING, SEAL, VENT	TUNGSTEN CARBIDE/NICKEL
17	WAVE SPRING	AMS5699 (X-750)
18	SPRING, COMPRESSION	AMS5699 (X-750)
19	SCREW, ADJUSTING	F593 GR2 (T316) OR ASTM 4193 B8M
20	PLATE, SPRING	A276 TP 316
21	PLUG, HEX, 3/8" SAE	A240 TP 316
22	PELLET, NYLOK	NYLON
23	HOLLOW HEX PLUG, 1/2" SAE	A240 TP 316
24	RING, BACKUP	PEEK
25	WIPER, D-STYLE, 1-1/2" PLUNGER	POLYURETHANE
26	FLANGE, BLANK	A276 TP 316
27	WEAR BAND, PLUNGER, 1-1/2"	DELRIN AF
28	SHCS, THREAD-LOCKING, 1/4-20 UNC X 1/2" LG	F593 GR2 & NYLON
29	SHCS, 3/8-16 UNC X 1-1/2" LG	A286 GR 660
30	SHCS, 3/8-16 UNC X 1-1/4" LG	A286 GR 660
31	SHCS, 5/16-18 UNC X 3/4" LG	A453 GR 660
32	O-RING	HNBR
33	O-RING	HNBR
34	O-RING	HNBR
35	O-RING	HNBR
36	O-RING	HNBR

Single Inlet
6,000 psi Supply
1,000-2,500 psi Regulated



Available Configurations:
SAE

BILL OF MATERIALS (CONT.)

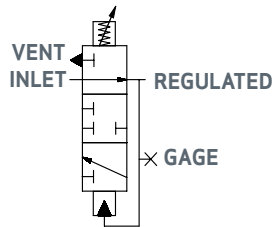
Item Number*	Description	Material
37	RING, BACKUP	PEEK
38	RING, BACKUP	PEEK
39	RING, BACKUP	PEEK
40	O-RING	HNBR
41	WEAR BAND, SEAL CARRIER	DELRIN AF
42	T-SEAL, ROD	CARBOXYLATED NITRILE / NYLATRON
43	RING, BACKUP	CARBOXYLATED NITRILE / NYLATRON
44	SPRING, COMPRESSION	A313 TP 316
45	BALL	A276 TP 316

Part Number	Description
29200	Valve, Pressure Regulator, GEN2, Manual Spring, 1000-2500 psi range, SAE Ports, Single Inlet

*The repair kit part number will match the category part number with (RK) at the end.

*The seal kit part number will match the category part number with (SK) at the end.

Single Inlet
6,000 psi Supply
1,500-3,500 psi Regulated



Available Configurations:
SAE, NPT

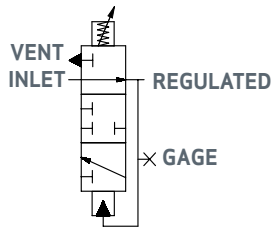
FUNCTIONAL DESIGN SPECIFICATION

Maximum Inlet Pressure Pressure	6,000 psi
Fully Open Flow Coefficient (Cv) Regulated	7
Fully Open Flow Coefficient (Cv) Vent	1
Set Point Range	1,500 - 3,500 psi
Typical Deadband at 5,000 psi Supply	300 ± 100 psi
Typical Deadband at 3,000 psi Supply	200 ± 50 psi
Fully Open Max Regulated Flow Rate	125 GPM
Predicted Cycle Life	10,000 Cycles
Operating Temperature Range	32 °F to 150 °F
Storage Temperature Range	32 °F to 150 °F
Acceptable Operating Fluid Types	Water or mineral oil-based control fluid
Mounting Restrictions	None
US Patent	10,739,796

BILL OF MATERIALS

Item Number*	Description	Material
1	BODY	A564 TP 630 (17-4 PH)
2	FLANGE, 1" SAE INLET, 1/2" SAE VENT	A276 TP 316
3	FLANGE, 1" SAE REGULATED	A276 TP 316
4	FLANGE BOTTOM	A276 TP 316
5	GUIDE, PLUNGER, 1-1/2"	A276 TP 316
6	ADAPTER, SPRING HOUSING	A276 TP S21800 (NITRONIC 60)
7	HOUSING, SPRING	A511 MT 316/316L (SEAMLESS TUBE)
8	CAP, SPRING HOUSING	A276 TP S21800 (NITRONIC 60)
9	NUT, O-LOCK	A276 TP 316
10	CAP, LOCK	A276 TP 316
11	INSERT, FLOW PORT, BLANK	TUNGSTEN CARBIDE / NICKEL
12	INSERT, FLOW PORT, SUPPLY AND VENT	TUNGSTEN CARBIDE / NICKEL

Single Inlet
6,000 psi Supply
1,500-3,500 psi Regulated

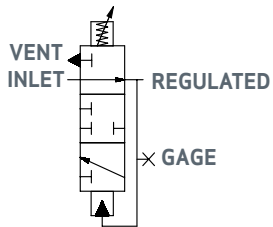


Available Configurations:
SAE, NPT

BILL OF MATERIALS (CONT.)

Item Number*	Description	Material
13	CARRIER, SEAL	A276 TP S21800 (NITRONIC 60)
14	PLUNGER, 1-1/2"	A276 TP S21800 (NITRONIC 60)
15	RING, SEAL, SUPPLY	TUNGSTEN CARBIDE / NICKEL
16	RING, SEAL, VENT	TUNGSTEN CARBIDE / NICKEL
17	WAVE SPRING	AMS5699 (X-750)
18	SPRING, COMPRESSION	AMS5699 (X-750)
19	SCREW, ADJUSTING	F593 GR2 (T316) OR ASTM 4193 B8M
20	PLATE, SPRING	A276 TP 316
21	PLUG, HEX, 3/8" SAE	A240 TP 316
22	PELLET, NYLOK	NYLON
23	HOLLOW HEX PLUG, 1/2" SAE	A240 TP 316
24	RING, BACKUP	PEEK
25	WIPER, D-STYLE, 1-1/2" PLUNGER	POLYURETHANE
26	FLANGE, BLANK	A276 TP 316
27	WEAR BAND, PLUNGER, 1-1/2"	DELIN AF
28	SHCS, THREAD-LOCKING, 1/4-20 UNC X 1/2" LG	F593 GR2 AND NYLON
29	SHCS, 3/8-16 UNC X 1-1/2 LG	A286 GR 660
30	SHCS, 3/8-16 UNC X 1-1/4" LG	A286 GR 660
31	SCHS, 5/16-18 UNC X 3/4" LG	A286 GR 660
32	O-RING	HNBR
33	O-RING	HNBR
34	O-RING	HNBR
35	O-RING	HNBR
36	O-RING	HNBR
37	RING, BACKUP	PEEK

Single Inlet
6,000 psi Supply
1,500-3,500 psi Regulated



Available Configurations:
SAE, NPT

BILL OF MATERIALS (CONT.)

Item Number*	Description	Material
38	RING, BACKUP	PEEK
39	RING, BACKUP	PEEK
40	O-RING	HNBR
41	WEAR BAND, SEAL CARRIER	DELTRIN AF
42	T-SEAL, ROD	CARBOXYLATED NITRILE / NYLATRON
43	RING, BACKUP	DELTRIN AF
44	SPRING, COMPRESSION	A313 TP 316
45	SPRING, COMPRESSION	AMS5699 (X-750)
46	BALL	A276 TP 316

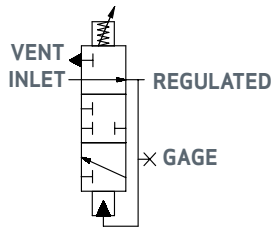
Part Numbers Description

29091	Valve, Pressure Regulator, GEN 2, Manual Spring, 1500-3500 psi range, SAE Ports, Single Inlet
29130	Valve, Pressure Regulator, GEN 2, Manual Spring, 1500-3500 psi range, NPT Ports, Single Inlet

*The repair kit part number will match the category part number with (RK) at the end.

*The seal kit part number will match the category part number with (SK) at the end.

Single Inlet
6,000 psi Supply
2,500-5,500 psi Regulated



Available Configurations:
NPT, SAE

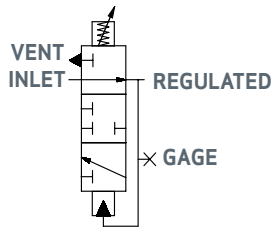
FUNCTIONAL DESIGN SPECIFICATION

Maximum Inlet Pressure Pressure	6,000 psi
Fully Open Flow Coefficient (Cv) Regulated	7
Fully Open Flow Coefficient (Cv) Vent	1
Set Point Range	2,500 - 5,500 psi
Typical Deadband at 5,000 psi Supply	500 ± 100 psi
Typical Deadband at 3,000 psi Supply	200 ± 50 psi
Fully Open Max Regulated Flow Rate	125 GPM
Predicted Cycle Life	10,000 Cycles
Operating Temperature Range	32° F to 150° F
Storage Temperature Range	32° F to 150° F
Acceptable Operating Fluid Types	Water or mineral oil-based control fluid
Mounting Restrictions	None
US Patent	10,739,796

BILL OF MATERIALS

Item Number*	Description	Material
1	BODY	A564 TP 630 (17-4 PH)
2	FLANGE, 1" NPT INLET, 1/2" NPT VENT	A276 TP 316
3	FLANGE OULET	A276 TP 316
4	FLANGE, BOTTOM, 3/8" SAE	A276 TP 316
5	GUIDE, PLUNGER, 1-1/4"	A276 TP 316
6	ADAPTER, SPRING HOUSING	A276 UNS S21800 (NITRONIC 60)
7	HOUSING, SPRING	A511 MT 316/316L (SEAMLESS TUBE)
8	CAP, SPRING HOUSING	A276 UNS S21800 (NITRONIC 60)
9	NUT, O-LOCK	A276 TP 316
10	CAP, LOCK	A276 TP 316
11	INSERT, FLOW PORT, BLANK	TUNGSTEN CARBIDE / NICKEL
12	INSERT, FLOW PORT, SUPPLY & VENT	TUNGSTEN CARBIDE / NICKEL

Single Inlet
6,000 psi Supply
2,500-5,500 psi Regulated

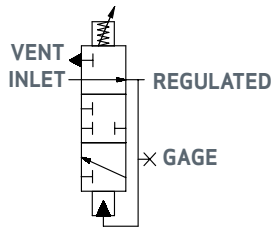


Available Configurations:
NPT, SAE

BILL OF MATERIALS (CONT.)

Item Number*	Description	Material
13	CARRIER, SEAL	A276 TP S21800 (NITRONIC 60)
14	PLUNGER, 1-1/4"	A276 TP S21800 (NITRONIC 60)
15	RING, SEAL, SUPPLY	TUNGSTEN CARBIDE / NICKEL
16	RING, SEAL, VENT	TUNGSTEN CARBIDE / NICKEL
17	WAVE SPRING	AMS5699 (X-750)
18	SPRING, COMPRESSION	AMS5699 (X-750)
19	SCREW, ADJUSTING	F593 GR2 (T316) OR ASTM 4193 B8M
20	PLATE, SPRING	A276 TP 316
21	PLUG, HEX	A240 TP 316
22	PELLET, NYLOK	NYLON
23	HOLLOW HEX PLUG, 1/2" SAE	A240 TP 316
24	RING, BACKUP	PEEK
25	WIPER, D-STYLE, 1-1/4" OD PLUNGER	POLYURETHANE
26	FLANGE, BLANK	A276 TP 316
27	WEAR BAND, PLUNGER	DELTRIN AF
28	SHCS, THREAD-LOCKING, 1/4-20 UNC X 1/2" LG	
29	SHCS, 3/8-16 UNC X 1-1/2" LG	A286 GR 660
30	SHCS, 3/8-16 UNC X 1-1/4" LG	A286 GR 660
31	SCHS, 5/16-18 UNC X 3/4" LG	A286 GR 660
32	O-RING	HNBR
33	O-RING	HNBR
34	O-RING	HNBR
35	O-RING	HNBR
36	O-RING	HNBR
37	RING, BACKUP	PEEK
38	RING, BACKUP	PEEK
39	RING, BACKUP	PEEK

Single Inlet
6,000 psi Supply
2,500-5,500 psi Regulated



Available Configurations:
NPT, SAE

BILL OF MATERIALS (CONT.)

Item Number*	Description	Material
40	O-RING	HNBR
41	WEAR BAND, SEAL CARRIER	DELRIN AF
42	T-SEAL, ROD	CARBOXYLATED NITRILE/ NYLATRON
43	WEARBAND, 1-1/4"	DELRIN AF
44	SPRING, COMPRESSION	AMS5670 (X-750) AMS 5667 (X-750) AMS 5699 (X-750)
45	SPRING, COMPRESSION	INCONEL X750
46	BALL	A276 TP 316

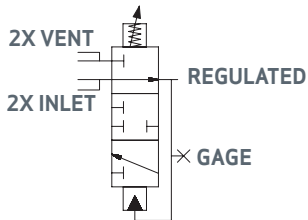
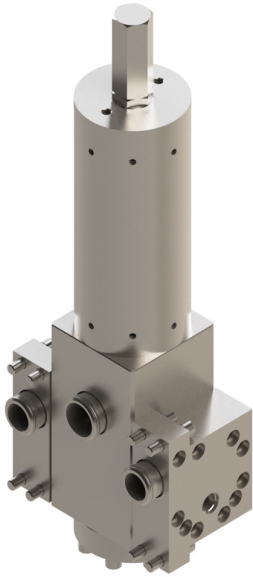
Part Numbers Description

Part Numbers	Description
29132	Valve, Pressure Regulator, GEN2, Manual Spring, 2500-5500 psi range, NPT Ports, Single Inlet
29133	Valve, Pressure Regulator, GEN2, Manual Spring, 2500-5500 psi range, SAE Ports, Single Inlet

*The repair kit part number will match the category part number with (RK) at the end.

*The seal kit part number will match the category part number with (SK) at the end.

Dual Inlets
6,000 psi Supply
1,500-3,500 psi Regulated



Available Configurations:
SAE, Seal Sub Mounted

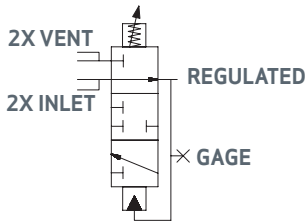
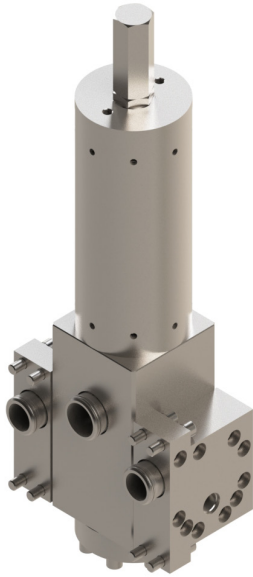
FUNCTIONAL DESIGN SPECIFICATION

Maximum Inlet Pressure Pressure	6,000 psi
Fully Open Flow Coefficient (Cv) Regulated	14
Fully Open Flow Coefficient (Cv) Vent	2
Set Point Range	1,500 - 3,500 psi
Typical Deadband at 5,000 PSI Supply	300 ± 100 psi
Typical Deadband at 3,000 PSI Supply	200 ± 50 psi
Fully Open Max Regulated Flow Rate	250 GPM
Predicted Cycle Life	10,000 Cycles
Operating Temperature Range	32° F to 150° F
Storage Temperature Range	32° F to 150° F
Acceptable Operating Fluid Types	Water or mineral oil-based control fluid
Mounting Restrictions	None
US Patent	10,739,796

BILL OF MATERIALS

Item Number*	Description	Material
1	BODY	A564 TP 630 (17-4 PH)
2	FLANGE, BOTTOM, 3/8" SAE	A276 TP 316
3	GUIDE, PLUNGER, 1-1/2"	A276 TP 316
4	ADAPTER, SPRING HOUSING	A276 TP S21800 (NITRONIC 60)
5	HOUSING, SPRING	A511 MT 316/316L (SEAMLESS TUBE)
6	CAP, SPRING HOUSING	A276 TP S21800 (NITRONIC 60)
7	NUT, O-LOCK	A276 TP 316
8	CAP, LOCK	A276 TP 316
9	INSERT, FLOW PORT, SUPPLY AND VENT	TUNGSTEN CARBIDE 8-10% NICKEL BINDER
10	CARRIER, SEAL	A276 TP S21800 (NITRONIC 60)
11	PLUNGER, 1-1/2"	A276 TP S21800 (NITRONIC 60)

Dual Inlets
6,000 psi Supply
1,500-3,500 psi Regulated

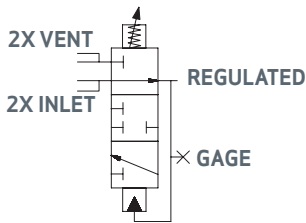
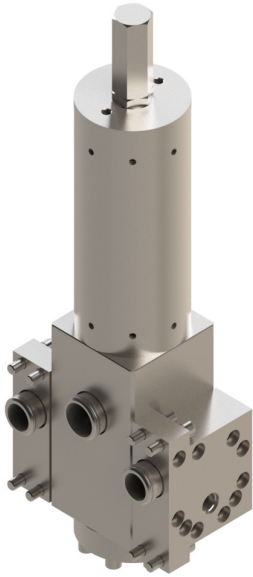


Available Configurations:
SAE, Seal Sub Mounted

BILL OF MATERIALS (CONT.)

Item Number*	Description	Material
12	RING, SEAL, SUPPLY	TUNGSTEN CARBIDE 8-10% NICKEL
13	RING, SEAL, VENT	TUNGSTEN CARBIDE / NICKEL
14	WAVE SPRING	AMS5699 (X-750)
15	SPRING, COMPRESSION	AMS5699 (X-750)
16	SCREW, ADJUSTING	F593 GR2 (T316) OR ASTM 4193 B8M
17	PLATE, SPRING	A276 TP 316
18	SPRING, COMPRESSION	A313 TP 316
19	SPRING, COMPRESSION	INCONEL X750
20	PLUG, HEX, 3/8" SAE	A240 TP 316
21	PELLET, NYLOK	NYLON
22	HOLLOW HEX PLUG, 1/2" SAE	A240 TP 316
23	RING, BACKUP	PEEK
24	WIPER, D-STYLE, 1.500 PLUNGER	POLYURETHANE
25	WEAR BAND, PLUNGER	DELTRIN AF
26	T-SEAL, ROD	CARBOXYLATED NITRILE / NYLATRON
27	WEAR BAND, 1-1/2"	DELTRIN AF
28	SHCS, THREAD-LOCKING, 1/4-20 UNC X 1/2" LG	
29	SHCS, 3/8-16 UNC X 1-1/2 LG	A286 GR 660
30	SCHS, 5/16-18 UNC X 3/4" LG	A286 GR 660
31	O-RING	HNBR
32	O-RING	HNBR
33	O-RING	HNBR
34	SHCS, 3/8-16 UNC X 1-1/4" LG	A286 GR 660
35	O-RING	HNBR
36	RING, BACKUP	PEEK
37	RING, BACKUP	PEEK

Dual Inlets
6,000 psi Supply
1,500-3,500 psi Regulated



Available Configurations:
SAE, Seal Sub Mounted

BILL OF MATERIALS (CONT.)

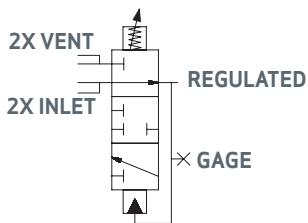
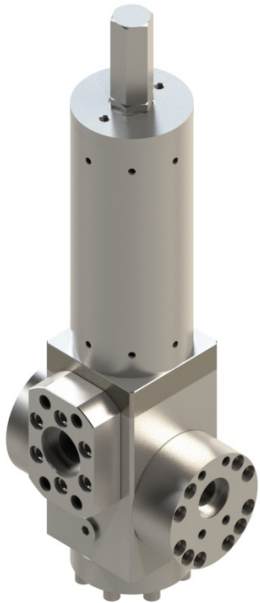
Item Number*	Description	Material
38	RING, BACKUP	PEEK
39	O-RING	HNBR
40	WEAR BAND, SEAL CARRIER	DELTRIN AF
41	FLANGE, INLET, RIGHT, 1/2" SAE	A276 TP 316
42	FLANGE, INLET, LEFT, 1/2" SAE	A276 TP 316
43	SHCS, 3/8 -16 UNC X 1-5/8" LG	A286
44	WASHER, NORD-LOCK, 3/8	254 SMO
45	O-RING	HNBR
46	BACKUP RING	TEFLON
47	SEAL SUB, 1"	A564 TP 630 (17-4PH)
48	SEAL SUB, 1-1/4"	A564 TP 630 (17-4PH)
49	O-RING	HNBR
50	BACKUP RING	TEFLON
51	BALL	A276 TP 316

Part Numbers	Description
29093	Valve, Pressure Regulator, GEN 2, Manual Spring, 1500-3500 psi range, Seal Sub Mounted, Dual Inlets

*The repair kit part number will match the category part number with (RK) at the end.

*The seal kit part number will match the category part number with (SK) at the end.

Dual Inlets
6,000 psi Supply
2,000-4,500 psi Regulated



Available Configurations:
SAE, Code 62 Seal Sub Mounted

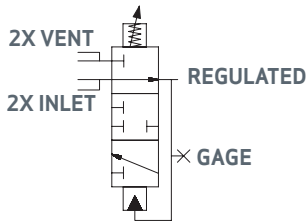
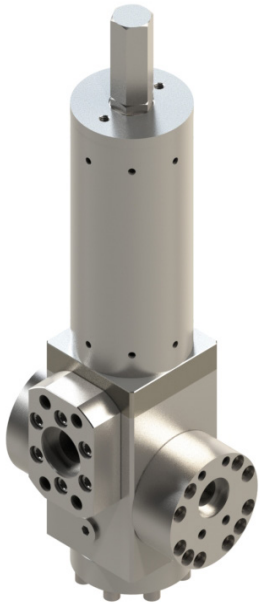
FUNCTIONAL DESIGN SPECIFICATION

Maximum Inlet Pressure Pressure	6,000 psi
Fully Open Flow Coefficient (Cv) Regulated	14
Fully Open Flow Coefficient (Cv) Vent	2
Set Point Range	2,000 - 4,500 psi
Typical Deadband at 5,000 PSI Supply	400 ± 100 psi
Typical Deadband at 3,000 PSI Supply	200 ± 50 psi
Fully Open Max Regulated Flow Rate	250 GPM
Predicted Cycle Life	10,000 Cycles
Operating Temperature Range	32° F to 150° F
Storage Temperature Range	32° F to 150° F
Acceptable Operating Fluid Types	Water or mineral oil-based control fluid
Mounting Restrictions	None
US Patent	10,739,796

BILL OF MATERIALS

Item Number*	Description	Material
1	BODY	A564 TP 630 (17-4 PH)
2	FLANGE BOTTOM	A276 TP 316
3	GUIDE, PLUNGER, 1-1/4"	A276 TP 316
4	ADAPTER, SPRING HOUSING	A276 TP S21800 (NITRONIC 60)
5	HOUSING, SPRING	A276 TP 316
6	CAP, SPRING HOUSING	A276 TP S21800 (NITRONIC 60)
7	NUT, O-LOCK	A276 TP 316
8	CAP, LOCK	A276 TP 316
9	INSERT, FLOW PORT, SUPPLY AND VENT	TUNGSTEN CARBIDE/NICKEL
10	CARRIER, SEAL	A276 TP S21800 (NITRONIC 60)
11	PLUNGER, 1-1/4"	A276 TP S21800 (NITRONIC 60)
12	RING, SEAL, SUPPLY	TUNGSTEN CARBIDE/NICKEL

Dual Inlets
6,000 psi Supply
2,000-4,500 psi Regulated

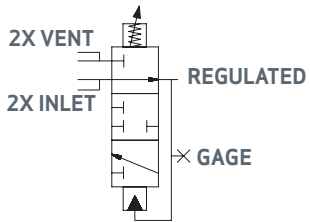
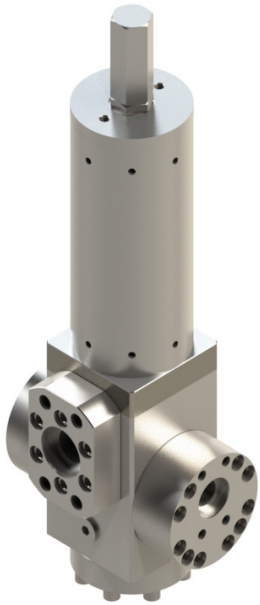


Available Configurations:
SAE, Code 62 Seal Sub Mounted

BILL OF MATERIALS (CONT.)

Item Number*	Description	Material
13	RING, SEAL, VENT	TUNGSTEN CARBIDE/NICKEL
14	WAVE SPRING	AMS5699 (X-750)
15	SPRING, COMPRESSION	AMS5699 (X-750)
16	SCREW, ADJUSTING	F593 GR2 (T316)
17	PLATE, SPRING	A276 TP 316
18	PLUG, HEX, 3/8" SAE	A240 TP 316
19	PELLET, NYLON	NYLON
20	HOLLOW HEX PLUG, 1/2" SAE	A240 TP 316
21	RING, BACKUP	PEEK
22	WIPER, D-STYLE, 1-1/4" OD PLUNGER	POLYURETHANE
23	WEAR BAND, PLUNGER, 1-1/4"	DELTRIN AF
24	SHCS, THREAD-LOCKING, 1/4-20 UNC X 1/2" LG	F593 GR2 & NYLON
25	SHCS, 3/8-16 UNC X 1-1/2" LG	A286 GR 660
26	SHCS, 3/8-16 UNC X 1.25 LG	A286 GR 660
27	SHCS, 5/16-18 UNC X 3/4" LG	A286 GR 660
28	O-RING	HNBR
29	O-RING	HNBR
30	O-RING	HNBR
31	O-RING	HNBR
32	O-RING	HNBR
33	RING, BACKUP	PEEK
34	RING, BACKUP	PEEK
35	RING, BACKUP	PEEK
36	O-RING	HNBR
37	WEAR BAND, SEAL CARRIER	DELTRIN AF

Dual Inlets
6,000 psi Supply
2,000-4,500 psi Regulated



Available Configurations:
SAE, Code 62 Seal Sub Mounted

BILL OF MATERIALS (CONT.)

Item Number*	Description	Material
38	T-SEAL, ROD	BUNA-N/NYLATRON
39	WEAR BAND	DELTRIN AF
40	SPRING, COMPRESSION	A313 TP 316
41	FLANGE, 1-1/2" C62	A276 TP 316
42	FLANGE, INLET, 1" C62	A276 TP 316
43	SPRING, COMPRESSION	INCONEL X750
44	BALL	A276 TP 316

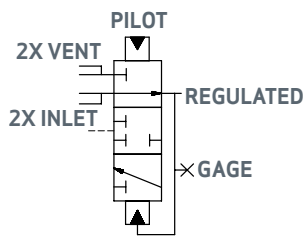
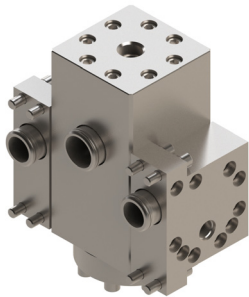
Part Numbers Description

29134	Valve, Pressure Regulator, GEN 2, Manual Spring, 2000-4500 psi range, Code 62 Ports, Dual Inlets
-------	--

*The repair kit part number will match the category part number with (RK) at the end.

*The seal kit part number will match the category part number with (SK) at the end.

Dual Inlets
6,000 psi Supply
300-5,000 psi Regulated



Available Configurations:
NPTF, SAE, Seal Sub Mounted

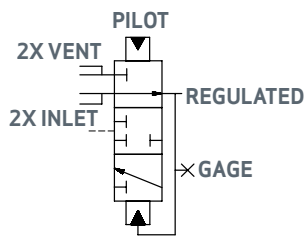
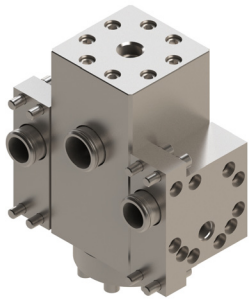
FUNCTIONAL DESIGN SPECIFICATION

Maximum Inlet Pressure Pressure	6,000 psi
Fully Open Flow Coefficient (Cv) Regulated	14
Fully Open Flow Coefficient (Cv) Vent	2
Set Point Range	300 - 5,000 psi
Typical Deadband at 5,000 psi Supply	200 ± 50 psi
Typical Deadband at 1,500 psi Supply	100 ± 50 psi
Fully Open Max Regulated Flow Rate	300 GPM
Predicted Cycle Life	10,000 Cycles
Operating Temperature Range	32° F to 150° F
Storage Temperature Range	32° F to 150° F
Acceptable Operating Fluid Types	Water or mineral oil-based control fluid
Mounting Restrictions	None
US Patent	10,739,796

BILL OF MATERIALS

Item Number*	Description	Material
1	BODY	A564 TP 630 (17-4 PH)
2	FLANGE BOTTOM	A276 TP 316
3	GUIDE, PLUNGER, 1-3/4"	A276 TP 316
4	INSERT, FLOW PORT, SUPPLY AND VENT	TUNGSTEN CARBIDE 8-10% NICKEL
5	CARRIER, SEAL	A276 TP S21800 (NITRONIC 60)
6	RING, SEAL, SUPPLY	TUNGSTEN CARBIDE 8-10% NICKEL
7	RING, SEAL, VENT	TUNGSTEN CARBIDE 8-10% NICKEL
8	WAVE SPRING	AMS5699 (X-750)
9	SPRING, COMPRESSION	AMS5699 (X-750)
10	PLUG, HEX, 3/8" SAE	A240 TP 316
11	PELLET, NYLOK	NYLON
12	HOLLOW HEX PLUG, 1/2" SAE	A240 TP 316

Dual Inlets
6,000 psi Supply
300-5,000 psi Regulated



Available Configurations:
NPTF, SAE, Seal Sub Mounted

BILL OF MATERIALS (CONT.)

Item Number*	Description	Material
13	RING, BACKUP	PEEK
14	SHCS, THREAD-LOCKING, 1/4-20 UNC X 1/2" LONG	A593 T316 and (NYLON)
15	SHCS 3/8-16 UNC X 1-1/2 LG	A286 GR 660
16	O-RING	HNBR
17	O-RING	HNBR
18	O-RING	HNBR
19	RING, BACKUP	PEEK
20	RING, BACKUP	PEEK
21	RING, BACKUP	PEEK
22	O-RING	HNBR
23	WEAR BAND, SEAL CARRIER	DELTRIN AF
24	FLANGE, INLET, RIGHT	A276 TP 316
25	FLANGE, INLET, LEFT	A276 TP 316
26	SHCS 3/8 - 16 X 1-5/8" LG	A286
27	WASHER, NORD-LOCK, 3/8"	254 SMO
28	O-RING	HNBR
29	BACKUP RING	TEFLON
30	SEAL SUB, 1"	A564 TP 630 (17-4PH)
31	SEAL SUB, 1-1/4"	A564 TP 630 (17-4PH)
32	O-RING	HNBR
33	BACKUP RING	TEFLON
34	HYDRAULIC PLUNGER, 1-3/4"	A276 TP S21800 (NITRONIC 60)
35	WEAR BAND, PLUNGER	DELTRIN AF
36	T-SEAL, PISTON	CARBOXYLATED NITRILE / NYLATRON

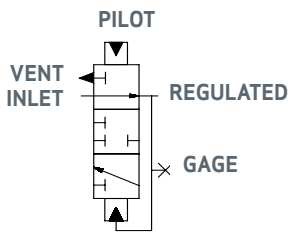
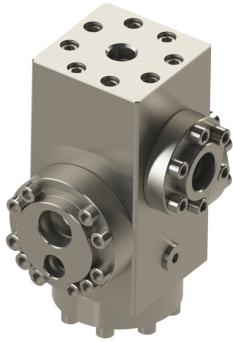
Part Numbers Description

29092	Valve, Pressure Regulator, GEN2, Hydraulic Pilot, 300-5,000 psi set point range, Seal Sub Mounted, Dual Inlets
-------	--

*The repair kit part number will match the category part number with (RK) at the end.

*The seal kit part number will match the category part number with (SK) at the end.

Single Inlet
6,000 psi Supply
300-5,000 psi Regulated



Available Configurations:
NPTF, SAE

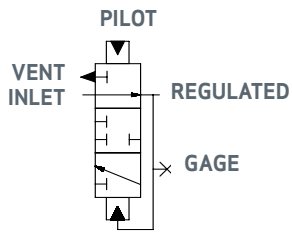
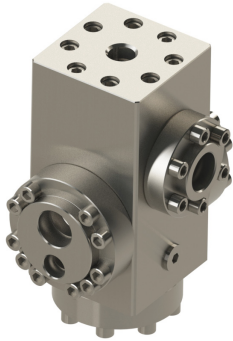
FUNCTIONAL DESIGN SPECIFICATION

Maximum Inlet Pressure Pressure	6,000 psi
Fully Open Flow Coefficient (Cv) Regulated	7
Fully Open Flow Coefficient (Cv) Vent	1
Set Point Range	300 - 5,000 psi
Typical Deadband at 5,000 psi Supply	200 ± 50 psi
Typical Deadband at 1,500 psi Supply	100 ± 50 psi
Fully Open Max Regulated Flow Rate	150 GPM
Predicted Cycle Life	10,000 Cycles
Operating Temperature Range	32° F to 150° F
Storage Temperature Range	32° F to 150° F
Acceptable Operating Fluid Types	Water or mineral oil-based control fluid
Mounting Restrictions	None
US Patent	10,739,796

BILL OF MATERIALS

Item Number*	Description	Material
1	BODY	A564 TP 630 (17-4 PH)
2	FLANGE BOTTOM	A276 TP 316
3	GUIDE, PLUNGER, 1-1/4"	A276 TP 316
4	INSERT, FLOW PORT, SUPPLY AND VENT	TUNGSTEN CARBIDE 8-10% NICKEL
5	CARRIER, SEAL	A276 TP S21800 (NITRONIC 60)
6	RING, SEAL, SUPPLY	TUNGSTEN CARBIDE 8-10% NICKEL
7	RING, SEAL, VENT	TUNGSTEN CARBIDE 8-10% NICKEL
8	WAVE SPRING	AMS5699 (X-750)
9	SPRING, COMPRESSION	AMS5699 (X-750)
10	PLUG, HEX, 3/8" SAE	A240 TP 316
11	PELLET, NYLOK	NYLON
12	HOLLOW HEX PLUG, 1/2" SAE	A240 TP 316

Single Inlet
6,000 psi Supply
300-5,000 psi Regulated



Available Configurations:
NPTF, SAE

BILL OF MATERIALS (CONT.)

Item Number*	Description	Material
13	RING, BACKUP	PEEK
14	SHCS, THREAD-LOCKING, 1/4-20 UNC X 1/2" LONG	A593 T316 and (NYLON)
15	SHCS 3/8-16 UNC X 1-1/2" LG	A286 GR 660
16	O-RING	HNBR
17	O-RING	HNBR
18	O-RING	HNBR
19	O-RING	HNBR
20	RING, BACKUP	PEEK
21	RING, BACKUP	PEEK
22	RING, BACKUP	PEEK
23	INSERT, FLOW PORT, BLANK	TUNGSTEN CARBIDE 8-10% NICKEL
24	WEAR BAND, SEAL CARRIER	DELTRIN AF
25	FLANGE, 1" SAE INLET, 1/2" SAE VENT	A276 TP 316
26	FLANGE, BLANK	A276 TP 316
27	HYDRAULIC PLUNGER, 1-3/4"	A276 TP S21800 (NITRONIC 60)
28	WEAR BAND, PLUNGER	DELTRIN AF
29	T-SEAL, PISTON	CARBOXYLATED NITRILE / NYLATRON
30	FLANGE OULET	A276 TP 316
31	SHCS, 3/8 - 16 UNC-2A X 1-1/4" LG	18-8 SS, F593 ALLOY
32	O-RING	HNBR

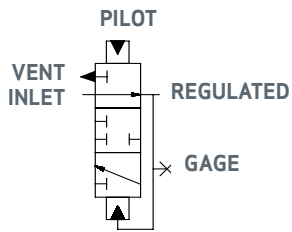
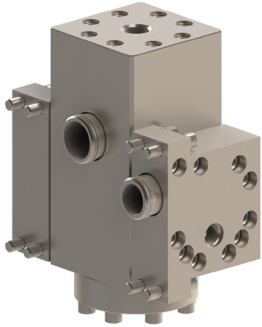
Part Numbers Description

29119	Valve, Pressure Regulator, GEN2 Hydraulic Pilot, 300-5,000 psi set point range, 1" SAE, Single Inlet
29120	Valve, Pressure Regulator, GEN2 Hydraulic Pilot, 300-5,000 psi set point range, 1" NPT, Single Inlet

*The repair kit part number will match the category part number with (RK) at the end.

*The seal kit part number will match the category part number with (SK) at the end.

LH Inlet
6,000 psi Supply
300-5,000 psi Regulated



Available Configurations:
NPTF, SAE, Seal Sub Mounted

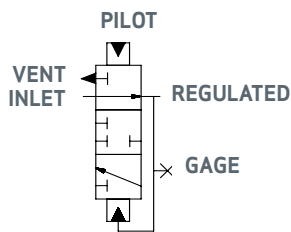
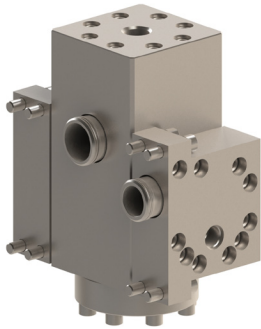
FUNCTIONAL DESIGN SPECIFICATION

Maximum Inlet Pressure Pressure	6,000 psi
Fully Open Flow Coefficient (Cv) Regulated	7
Fully Open Flow Coefficient (Cv) Vent	1
Set Point Range	300 - 5,000 psi
Typical Deadband at 5,000 psi Supply	200 ± 50 psi
Typical Deadband at 1,500 psi Supply	100 ± 50 psi
Fully Open Max Regulated Flow Rate	150 GPM
Predicted Cycle Life	10,000 Cycles
Operating Temperature Range	32° F to 150° F
Storage Temperature Range	32° F to 150° F
Acceptable Operating Fluid Types	Water or mineral oil-based control fluid
Mounting Restrictions	None
US Patent	10,739,796

BILL OF MATERIALS

Item Number*	Description	Material
1	BODY	A564 TP 630 (17-4 PH)
2	FLANGE BOTTOM	A276 TP 316
3	GUIDE, PLUNGER, 1-3/4"	A276 TP 316
4	INSERT, FLOW PORT, SUPPLY	TUNGSTEN CARBIDE 8-10% NICKEL
5	CARRIER, SEAL	A276 TP S21800 (NITRONIC 60)
6	RING, SEAL, SUPPLY	TUNGSTEN CARBIDE 8-10% NICKEL
7	RING, SEAL, VENT	TUNGSTEN CARBIDE 8-10% NICKEL
8	WAVE SPRING	AMS5699 (X-750)
9	SPRING, COMPRESSION	AMS5699 (X-750)
10	PLUG, HEX, 3/8" SAE	A240 TP 316
11	PELLET, NYLOK	NYLON
12	HOLLOW HEX PLUG, 1/2" SAE	A240 TP 316
13	RING, BACKUP	PEEK

LH Inlet
6,000 psi Supply
300-5,000 psi Regulated



Available Configurations:
NPTF, SAE, Seal Sub Mounted

BILL OF MATERIALS (CONT.)

Item Number*	Description	Material
14	SHCS, THREAD-LOCKING, 1 1/4-20 UNC X 1/2" LONG	A593 T316 and (NYLON)
15	SHCS, 3/8-16 UNC X 1-1/2 LG	A286 GR 660
16	O-RING	HNBR
17	O-RING	HNBR
18	O-RING	HNBR
19	O-RING	HNBR
20	O-RING	HNBR
21	RING, BACKUP	PEEK
22	RING, BACKUP	PEEK
23	RING, BACKUP	PEEK
24	FLANGE, BLANK, RIGHT	A276 TP 316
25	FLANGE, INLET, LEFT	A276 TP 316
26	SHCS, 3/8 -16 UNC X 1-5/8" LG	A286
27	WASHER, NORD-LOCK, 3/8	254 SMO
28	O-RING	HNBR
29	BACKUP RING	TEFLON
30	SEAL SUB, 1"	A564 TP 630 (17-4PH)
31	SEAL SUB, 1-1/4"	A564 TP 630 (17-4 PH)
32	INSERT, FLOW PORT, BLANK	TUNGSTEN CARBIDE 8-10% NICKEL
33	BACKUP RING	TEFLON
34	HYDRAULIC PLUNGER, 1-3/4"	A276 TP S21800
35	WEAR BAND, PLUNGER	DELIN AF
36	T-SEAL, PISTON	CARBOXYLATED NITRILE / NYLATRON
37	WEAR BAND, SEAL CARRIER	DELIN AF

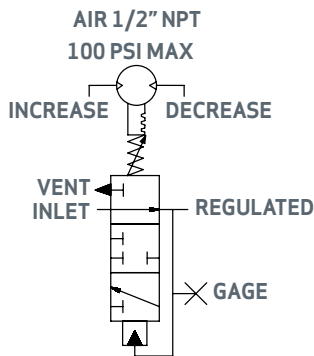
Part Numbers Description

29121	Valve, Pressure Regulator, GEN2 Hydraulic Pilot, 300-5,000 psi set point range, 1" Seal Sub Mounted, LH Inlet
-------	---

*The repair kit part number will match the category part number with (RK) at the end.

*The seal kit part number will match the category part number with (SK) at the end.

Single Inlet
6,000 psi Supply
500-1,500 psi Regulated



Available Configurations:
NPTF, SAE, Code 62

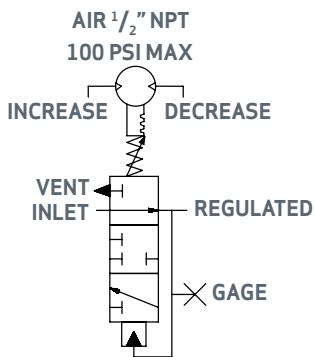
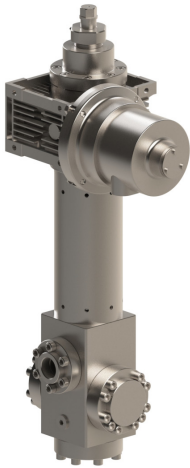
FUNCTIONAL DESIGN SPECIFICATION

Maximum Inlet Pressure Pressure	6,000 psi
Fully Open Flow Coefficient (Cv) Regulated	7
Fully Open Flow Coefficient (Cv) Vent	1
Set Point Range	500 - 1,500 psi
Typical Deadband at 5,000 psi Supply	400 ± 100 psi
Typical Deadband at 3,000 psi Supply	200 ± 50 psi
Fully Open Max Regulated Flow Rate	100 GPM
Predicted Cycle Life	10,000 Cycles
Operating Temperature Range	32° F to 150° F
Storage Temperature Range	32° F to 150° F
Acceptable Operating Fluid Types	Water or mineral oil-based control fluid
Mounting Restrictions	None
US Patent	10,739,796

BILL OF MATERIALS

Item Number*	Description	Material
1	BODY	A564 TP 630 (17-4 PH)
2	FLANGE, 1" NPT INLET, 1/2" NPT VENT	A276 TP 316
3	FLANGE OUTLET	A276 TP 316
4	FLANGE BOTTOM	A276 TP 316
5	GUIDE, PLUNGER, 1-1/2"	A276 TP 316
6	ADAPTER, SPRING HOUSING	A276 TP S21800 (NITRONIC 60)
7	HOUSING, SPRING	A276 TP 316
8	INSERT, FLOW PORT, BLANK	TUNGSTEN CARBIDE 8-10% NICKEL
9	INSERT, FLOW PORT, SUPPLY AND VENT	TUNGSTEN CARBIDE 8-10% NICKEL
10	CARRIER, SEAL	A276 TP S21800 (NITRONIC 60)
11	PLUNGER, 1-1/2"	A276 TP S21800 (NITRONIC 60)

Single Inlet
6,000 psi Supply
500-1,500 psi Regulated

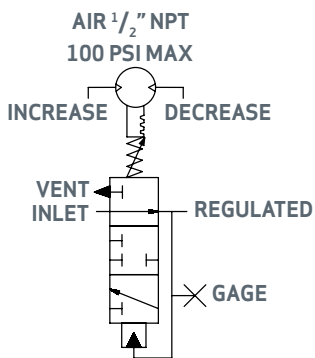
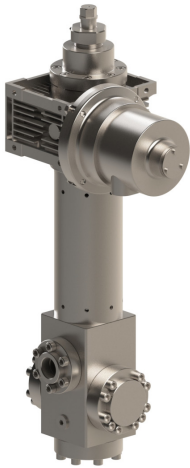


Available Configurations:
NPTF, SAE, Code 62

BILL OF MATERIALS (CONT.)

Item Number*	Description	Material
12	RING, SEAL, SUPPLY	TUNGSTEN CARBIDE 8-10% NICKEL
13	RING, SEAL, VENT	TUNGSTEN CARBIDE 8-10% NICKEL
14	WAVE SPRING	AMS5699 (X-750)
15	SPRING, COMPRESSION	AMS5699 (X-750)
16	PLATE, SPRING	A276 TP 316
17	PLUG, HEX, 3/8" SAE	A240 TP 316
18	PELLET, NYLON	NYLON
19	HOLLOW HEX PLUG, 1/2"	A240 TP 316
20	RING, BACKUP	PEEK
21	WIPER, D-STYLE, 1.500 PLUNGER	POLYURETHANE
22	FLANGE, BLANK	A276 TP 316
23	WEAR BAND, PLUNGER	DELTRIN AF
24	SHCS, THREAD-LOCKING	A593 T316
25	SHCS, 3/8-16 UNC X 1-1/2" LG	A286 GR 660
26	SHCS, 3/8-16 UNC X 1-1/4" LG	A286 GR 660
27	SCHS, 5/16-18 UNC X 3/4" LG	A286 GR 660
28	O-RING	HNBR
29	O-RING	HNBR
30	O-RING	HNBR
31	O-RING	HNBR
32	RING, BACKUP	PEEK
33	RING, BACKUP	PEEK
34	RING, BACKUP	PEEK
35	O-RING	HNBR
36	WEAR BAND, SEAL CARRIER	DELTRIN AF

Single Inlet
6,000 psi Supply
500-1,500 psi Regulated



Available Configurations:
NPTF, SAE, Code 62

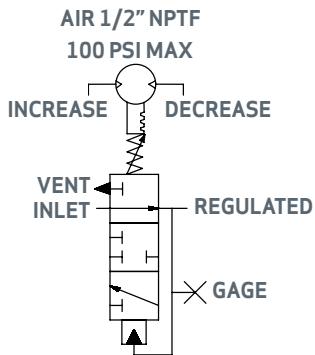
BILL OF MATERIALS (CONT.)

Item Number*	Description	Material
37	T-SEAL, ROD	CARBOXYLATED NITRILE / NYLATRON
38	RING, BACKUP	DELTRIN AF
39	SPRING, COMPRESSION	AMS5699 (X-750)
40	AIR MOTOR, GEN2	REFER TO PARTS LIST

Part Numbers Description

29096	Valve, Pressure Regulator, GEN2, Air Motor, 500-1,500 psi set point range, NPT Ports, Single Inlet
29138	Valve, Pressure Regulator, GEN2, Air Motor, 500-1,500 psi set point range, SAE Ports, Single Inlet
29162	Valve, Pressure Regulator, GEN2, Air Motor, 500-1,500 psi set point range, Code 62 Ports, Single Inlet

Single Inlet
6,000 psi Supply
2,500-5,500 psi Regulated



Available Configurations:
SAE

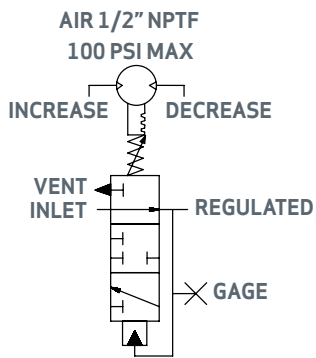
FUNCTIONAL DESIGN SPECIFICATION

Maximum Inlet Pressure Pressure	6,000 psi
Fully Open Flow Coefficient (Cv) Regulated	7
Fully Open Flow Coefficient (Cv) Vent	1
Set Point Range	2,500 - 5,500 psi
Typical Deadband at 5,000 psi Supply	500 ± 100 psi
Typical Deadband at 3,000 psi Supply	200 ± 50 psi
Fully Open Max Regulated Flow Rate	125 GPM
Predicted Cycle Life	10,000 Cycles
Operating Temperature Range	32° F to 150° F
Storage Temperature Range	32° F to 150° F
Acceptable Operating Fluid Types	Water or mineral oil-based control fluid
Mounting Restrictions	None
US Patent	10,739,796

BILL OF MATERIALS

Item Number*	Description	Material
1	BODY	A564 TP 630 (17-4 PH)
2	FLANGE, 1" SAE INLET, 1/2" SAE VENT	A276 TP 316
3	FLANGE, 1" SAE REGULATED	A276 TP 316
4	FLANGE BOTTOM	A276 TP 316
5	GUIDE, PLUNGER, 1-1/4"	A276 TP 316
6	ADAPTER, SPRING HOUSING	A276 TP S21800 (NITRONIC 60)
7	HOUSING, SPRING	A276 TP 316
8	INSERT, FLOW PORT, BLANK	TUNGSTEN CARBIDE 8-10% NICKEL
9	NSERT, FLOW PORT, SUPPLY & VENT	TUNGSTEN CARBIDE 8-10% NICKEL
10	CARRIER, SEAL	A276 TP S21800 (NITRONIC 60)
11	PLUNGER, 1-1/4"	A276 TP S21800 (NITRONIC 60)

Single Inlet
6,000 psi Supply
2,500-5,500 psi Regulated

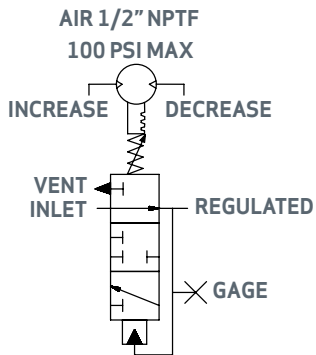


Available Configurations:
SAE

BILL OF MATERIALS (CONT.)

Item Number*	Description	Material
12	RING, SEAL, SUPPLY	TUNGSTEN CARBIDE 8-10% NICKEL
13	RING, SEAL, VENT	TUNGSTEN CARBIDE 8-10% NICKEL
14	WAVE SPRING	AMS5699 (X-750)
15	SPRING, COMPRESSION	AMS5699 (X-750)
16	PLATE, SPRING	A276 TP 316
17	PLUG, HEX, 3/8" SAE	A240 TP 316
18	PELLET, NYLON	NYLON
19	HOLLOW HEX PLUG, 1/2"	A240 TP 316
20	RING, BACKUP	PEEK
21	WIPER, D-STYLE, 1-1/4" PLUNGER	POLYURETHANE
22	FLANGE, BLANK	A276 TP 316
23	WEAR BAND, PLUNGER, 1-1/4"	DELRIN AF
24	SHCS, THREAD-LOCKING, 1/4-20 UNC X 1/2" LONG	F593 GR2 & NYLON
25	SHCS, 3/8-16 UNC X 1-1/2 LG	A286 GR 660
26	SHCS, 3/8-16 UNC X 1-1/4" LG	A286 GR 660
27	SCHS, 5/16-18 UNC X 3/4" LG	A286 GR 660
28	O-RING	HNBR
29	O-RING	HNBR
30	O-RING	HNBR
31	O-RING	HNBR
32	RING, BACKUP	PEEK
33	RING, BACKUP	PEEK
34	RING, BACKUP	PEEK
35	O-RING	HNBR

Single Inlet
6,000 psi Supply
2,500-5,500 psi Regulated



Available Configurations:
SAE

BILL OF MATERIALS (CONT.)

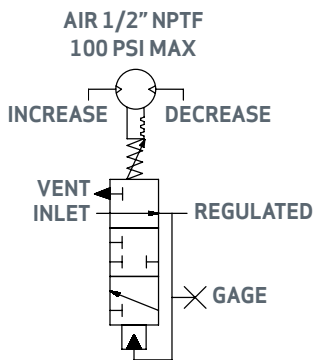
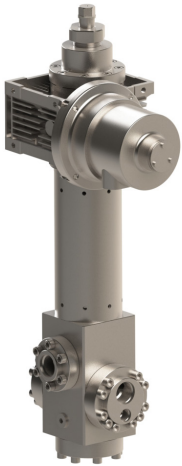
Item Number*	Description	Material
36	WEAR BAND, SEAL CARRIER	DELTRIN AF
37	T-SEAL, ROD	BUNA-N / NYLATRON
38	WEARBAND, 1-1/4"	DELTRIN AF
39	SPRING, COMPRESSION	AMS5670 (X-750)
40	SPRING, COMPRESSION	AMS5699 (X-750)
41	AIR MOTOR, GEN 2	REFER TO PARTS LIST

Part Numbers	Description
29139	Valve, Pressure Regulator, GEN2, Air Motor, 2,500-5,500 psi set point range, SAE Ports, Single Inlet

*The repair kit part number will match the category part number with (RK) at the end.

*The seal kit part number will match the category part number with (SK) at the end.

Dual Inlets
6,000 psi Supply
1,500-3,500 psi Regulated



Available Configurations:
NPT, SAE

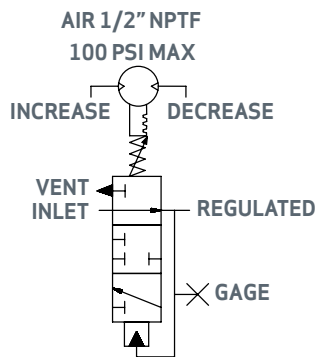
FUNCTIONAL DESIGN SPECIFICATION

Maximum Inlet Pressure Pressure	6,000 psi
Fully Open Flow Coefficient (Cv) Regulated	14
Fully Open Flow Coefficient (Cv) Vent	2
Set Point Range	1,500 - 3,500 psi
Typical Deadband at 5,000 psi Supply	300 ± 100 psi
Typical Deadband at 3,000 psi Supply	200 ± 50 psi
Fully Open Max Regulated Flow Rate	250 GPM
Predicted Cycle Life	10,000 Cycles
Operating Temperature Range	32° F to 150° F
Storage Temperature Range	32° F to 150° F
Acceptable Operating Fluid Types	Water or mineral oil-based control fluid
Mounting Restrictions	None
US Patent	10,739,796

BILL OF MATERIALS

Item Number*	Description	Material
1	BODY	A564 TP 630 (17-4 PH)
2	FLANGE, 1" SAE INLET, 1/2" SAE VENT	A276 TP 316
3	FLANGE, 1" SAE	A276 TP 316
4	FLANGE, BOTTOM, 3/8" SAE	A276 TP 316
5	GUIDE, PLUNGER, 1-1/2"	A276 TP 316
6	ADAPTER, SPRING HOUSING	A276 TP S21800 (NITRONIC 60)
7	HOUSING, SPRING	A511 MT 316/316L (SEAMLESS TUBE)
8	INSERT, FLOW PORT, SUPPLY AND VENT	TUNGSTEN CARBIDE/NICKEL
9	CARRIER, SEAL	A276 TP S21800 (NITRONIC 60)
10	PLUNGER, 1-1/2"	A276 TP S21800 (NITRONIC 60)

Dual Inlets
6,000 psi Supply
1,500-3,500 psi Regulated



Available Configurations:
NPT, SAE

BILL OF MATERIALS (CONT.)

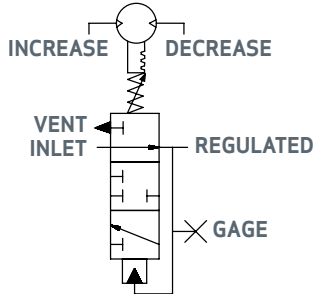
Item Number*	Description	Material
11	RING, SEAL, SUPPLY	TUNGSTEN CARBIDE NICKEL
12	RING, SEAL, VENT	TUNGSTEN CARBIDE NICKEL
13	WAVE SPRING	AMS5699 (X-750)
14	SPRING, COMPRESSION	AMS5699 (X-750)
15	PLATE, SPRING	A276 TP 316
16	PLUG, HEX	A240 TP 316
17	PELLET, NYLON	NYLON
18	HOLLOW HEX PLUG, 1/2" SAE	A240 TP 316
19	RING, BACKUP	PEEK
20	WIPER, D-STYLE, 1.500 PLUNGER	POLYURETHANE
21	WEAR BAND, PLUNGER, 1-1/2"	DELRIN AF
22	SHCS, THREAD-LOCK- ING, 1/4-20 UNC X 1/2" LG	
23	SHCS, 3/8-16 UNC X 1-1/2 LG	A286 GR 660
24	SHCS, 3/8-16 UNC X 1-1/4" LG	A286 GR 660
25	SCHS, 5/16-18 UNC X 3/4" LG	A286 GR 660
26	O-RING	HNBR
27	O-RING	HNBR
28	O-RING	HNBR
29	O-RING	HNBR
30	RING, BACKUP	PEEK
31	RING, BACKUP	PEEK
32	RING, BACKUP	PEEK
33	O-RING	HNBR
34	WEAR BAND, SEAL CARRIER	DELRIN AF
35	T-SEAL, ROD	CARBOXYLATED NITRILE / NYLATRON

Continued on page 18.2

Dual Inlets
6,000 psi Supply
1,500-3,500 psi Regulated



AIR 1/2" NPTF
100 PSI MAX



Available Configurations:
NPT, SAE

BILL OF MATERIALS (CONT.)

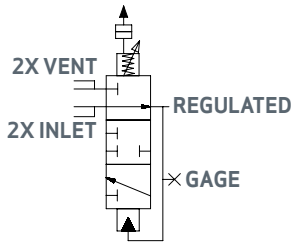
Item Number*	Description	Material
36	RING, BACKUP	PEEK
37	SPRING, COMPRESSION	A313 TP 316
38	SPRING, COMPRESSION	AMS5699 (X-750)
39	AIR MOTOR, GEN2	REFER TO PARTS LIST

Part Number	Description
29144	Valve, Pressure Regulator, GEN2, Air Motor, 1500-3500 psi set point range, SAE Ports, Dual Inlet

*The repair kit part number will match the category part number with (RK) at the end.

*The seal kit part number will match the category part number with (SK) at the end.

Dual Inlets
6,000 psi Supply
2,000-4,500 psi Regulated



Available Configurations:
SAE, Code 62 Seal Sub

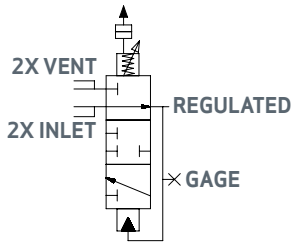
FUNCTIONAL DESIGN SPECIFICATION

Maximum Inlet Pressure	6,000 psi
Fully Open Flow Coefficient (Cv) Regulated	14
Fully Open Flow Coefficient (Cv) Vent	2
Set Point Range	2,000 - 4,500 psi
Typical Deadband at 5,000 psi Supply	400 ± 100 psi
Fully Open Max Regulated Flow Rate	250 GPM
Predicted Cycle Life	10,000 Cycles
Operating Temperature Range	32° F to 150° F
Storage Temperature Range	32° F to 150° F
Acceptable Operating Fluid Types	Water or mineral oil-based control fluid
Mounting Restrictions	None
US Patent	10,739,796

BILL OF MATERIALS

Item Number*	Description	Material
1	BODY	A564 TP 630 (17-4 PH)
2	FLANGE BOTTOM	A276 TP 316
3	GUIDE, PLUNGER, 1-1/4"	A276 TP 316
4	ADAPTER, SPRING HOUSING	A276 TP S21800 (NITRONIC 60)
5	SPRING HOUSING, PRESSURE COMPENSATOR	A511 MT 316/316L (SEAMLESS TUBE)
6	CAP, SPRING HOUSING, PRESSURE COMPENSATOR	A276 UNS S21800 (NITRONIC 60)
7	NUT, O-LOCK	A276 TP 316
8	CAP, LOCK	A276 TP 316
9	INSERT, FLOW PORT, SUPPLY AND VENT	TUNGSTEN CARBIDE 8-10% NICKEL
10	CARRIER, SEAL	A276 TP S21800 (NITRONIC 60)
11	PLUNGER, 1-1/4"	A276 TP S21800 (NITRONIC 60)
12	RING, SEAL, SUPPLY	TUNGSTEN CARBIDE 8-10% NICKEL

Dual Inlets
6,000 psi Supply
2,000-4,500 psi Regulated

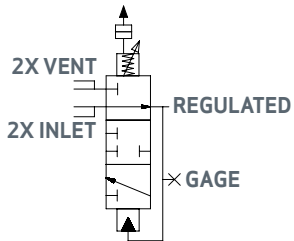


Available Configurations:
SAE, Code 62 Seal Sub

BILL OF MATERIALS (CONT.)

Item Number*	Description	Material
13	RING, SEAL, VENT	TUNGSTEN CARBIDE 8-10% NICKEL
14	WAVE SPRING	AMS5699 (X-750)
15	SPRING, COMPRESSION	AMS5699 (X-750)
16	SCREW, ADJUSTING	F593 GR2 (T316) OR ASTM 4193 B8M
17	PLATE, SPRING	A276 TP 316
18	PLUG, HEX, 3/8" SAE	A240 TP 316
19	PELLET, NYLOK	NYLON
20	HOLLOW HEX PLUG, 1/2" SAE	A240 TP 316
21	RING, BACKUP	PEEK
22	WIPER, D-STYLE, 1-1/4" OD PLUNGER	POLYURETHANE
23	WEAR BAND, PLUNGER, 1-1/4"	DELTRIN AF
24	SHCS, THREAD-LOCKING, 1/4-20 UNC X 1/2" LG	F593 GR2 & NYLON
25	SHCS, 3/8-16 UNC X 1-1/2 LG	A286 GR 660
26	SHCS, 3/8-16 UNC X 1-1/4" LG	A286 GR 660
27	SCHS, 5/16-18 UNC X 3/4" LG	A286 GR 660
28	O-RING	HNBR
29	O-RING	HNBR
30	O-RING	HNBR
31	O-RING	HNBR
32	O-RING	HNBR
33	RING, BACKUP	PEEK
34	RING, BACKUP	PEEK
35	RING, BACKUP	PEEK
36	O-RING	HNBR
37	WEAR BAND, SEAL CARRIER	DELTRIN AF
38	T-SEAL, ROD	CARBOXYLATED NITRILE/ NYLATRON

Dual Inlets
6,000 psi Supply
2,000-4,500 psi Regulated



Available Configurations:
SAE, Code 62 Seal Sub

BILL OF MATERIALS (CONT.)

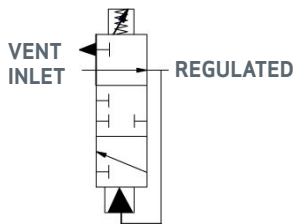
Item Number*	Description	Material
39	WEAR BAND	DELTRIN AF
40	SPRING, COMPRESSION	A313 TP 316
41	FLANGE, 1-1/2" C62	A276 TP 316
42	FLANGE, INLET, 1" C62	A276 TP 316
43	SPRING, COMPRESSION	INCONEL X750
44	BALL	A276 TP 316
45	PORT PLUG, 1/4" NPTF	F593 T316
46	COMPENSATOR, PRESSURE	REFER TO PARTS LIST
47	O-RING	HNBR

Part Numbers	Description
29094	Valve, Pressure Regulator, Gen 2, Air Motor, 2000-4500 psi range, SAE Ports, Double Inlet

*The repair kit part number will match the category part number with (RK) at the end.

*The seal kit part number will match the category part number with (SK) at the end.

Single Inlet
15,000 psi Supply
3,000-10,000 psi Regulated



Available Configurations:
NPT, Other configurations
available upon request

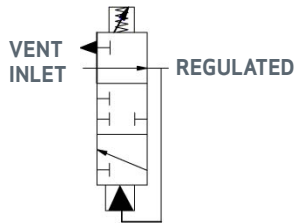
FUNCTIONAL DESIGN SPECIFICATION

Maximum Inlet Pressure	15,000 psi
Fully Open Flow Coefficient (Cv) Regulated	8
Fully Open Flow Coefficient (Cv) Vent	8
Set Point Range	3,000 - 10,000 psi
Typical Deadband at 15,000 psi Supply	900 ± 100 PSI
Fully Open Max Regulated Flow Rate	4 GPM
Predicted Cycle Life	7,500 Cycles
Operating Temperature Range	32° F to 150° F
Storage Temperature Range	32° F to 150° F
Acceptable Operating Fluid Types	Water or mineral oil-based control fluid
Mounting Restrictions	None
US Patent	11,261,982

BILL OF MATERIALS

Item Number*	Description	Material
1	BODY, 3/8" NPT	A276 TP S20910 (NITRONIC 50)
2	TUBE SPRING	ALUM 6061 ANDZ BLUE
3	PLATE SEAL	TUNGSTEN CARBIDE/NICKEL
4	CONTAINER, SEAL	A276 TP S21800 (NITRONIC 60)
5	SPRING DISK	ALUMINUM GRADE 6061
6	BALL	A276 TP 316 {316 SS}
7	SHCS, 5/16-18 UNC X 1" LG	A453 GR660
8	SPRING COMPRESSION	ASTM A401
9	O-RING	BUNA-N
10	BACKUP RING	PEEK
11	FLANGE, 1/4" NPTF	A276 TP 316 (316 SS)
12	HYDRO SEAL, VENT	TUNGSTEN CARBIDE/NICKEL

Single Inlet
15,000 psi Supply
3,000-10,000 psi Regulated



Available Configurations:
NPT, Other configurations
available upon request

BILL OF MATERIALS

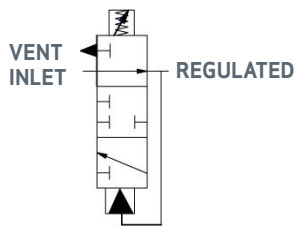
Item Number*	Description	Material
13	O-RING	BUNA-N
14	O-RING	HNBR
15	O-RING	BUNA-N
16	BACKUP RING	PEEK
17	SHCS #4-40 UNC X 3/8" LG NYLOK	F593 Gr 2 COND A (316 SS)/ NYLON
18	O-RING	HNBR
19	PARBAK, BACK-UP RING	NITRILE
20	ADJUSTMENT SCREWS, 1/2"-13 UNC	18-8 SS
21	JAM - NUT, HEX, 1/2"-13 UNC	TP 316
22	PIPE PLUG, 3/8" NPT, VENTED	TP 316
23	PANEL BRACKET	ALUM 6061 ANDZ BLUE
24	CAP, SPRING	ALUM 6061 ANDZ BLUE

Part Numbers	Description
29163	Surface Compact Pressure Regulator, 15,000 psi inlet, 3,000-10,000 psi set point range, NPT Ports

*The repair kit part number will match the category part number with (RK) at the end.

*The seal kit part number will match the category part number with (SK) at the end.

Single Inlet
15,000 psi Supply
3,000-9,000 psi Regulated



Available Configurations:
NPT, MP, Other configurations
available upon request

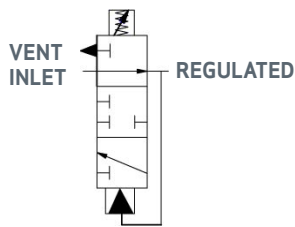
FUNCTIONAL DESIGN SPECIFICATION

Maximum Inlet Pressure	15,000 PSI
Fully Open Flow Coefficient (Cv) Regulated	8
Fully Open Flow Coefficient (Cv) Vent	8
Set Point Range	3,000 - 9,000 psi
Typical Deadband at 15,000 psi Supply	900 ± 100 psi
Fully Open Max Regulated Flow Rate	4 GPM
Predicted Cycle Life	7,500 Cycles
Operating Temperature Range	32° F to 150° F
Storage Temperature Range	32° F to 150° F
Acceptable Operating Fluid Types	Water or mineral oil-based control fluid
Mounting Restrictions	None
US Patent	11,261,982

BILL OF MATERIALS

Item Number*	Description	Material
1	BODY, 3/8" NPTF	A276 TP S20910 (NITRONIC 50)
2	HOUSING, SPRING	A276 UNS S21800 (NITRONIC 60)
3	PLATE, SEAL	TUNGSTEN CARBIDE/NICKEL
4	CONTAINER, SEAL	A276 TP S21800 (NITRONIC 60)
5	SPRING DISK	A276 TP 316 (316 SS)
6	BALL	A276 TP 316 (316 SS)
7	SHCS, 5/16-18 UNC X 1" LG	A453 GR660
8	SPRING, COMPRESSION	INCONEL X-750
9	O-RING	BUNA-N
10	BACKUP RING	PEEK
11	FLANGE, 1/4" NPTF	A276 TP 316 (316 SS)
12	HYDRO SEAL, VENT	TUNGSTEN CARBIDE/NICKEL

Single Inlet
15,000 psi Supply
3,000-9,000 psi Regulated



Available Configurations:
NPT, MP, Other configurations
available upon request

BILL OF MATERIALS

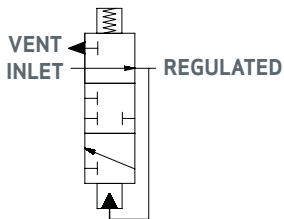
Item Number*	Description	Material
13	O-RING	BUNA-N
14	O-RING	HNBR
15	O-RING	BUNA-N
16	BACKUP RING	PEEK
17	SHCS #4-40 UNC X 3/8" LG NYLOK	F593 Gr 2 COND A (316 SS)/ NYLON
18	O-RING	HNBR
19	BACK-UP RING	PEEK
20	ADJUSTMENT SCREW, 1/2"-13 UNC	TP 316
21	JAM - NUT, HEX, 1/2'-13 UNC	TP 316
22	PIPE PLUG, 3/8" NPT, VENTED	TP 316

Part Numbers	Description
29149	Valve, Compact Regulator, 15,000 psi Inlet, 3,000-9,000 psi set point range, 1/4" Supply and Vent, 3/8" Regulated NPT Ports
29150	Valve, Compact Regulator, 15,000 psi Inlet, 3,000-9,000 psi set point range, 1/4" Supply and Vent, 3/8" Regulated NPT Ports, Panel Bracket
29164	Valve, Compact Regulator, 15,000 psi Inlet, 3,000-9,000 psi set point range, 1/4" MP Ports
29167	Valve, Compact Regulator, 15,000 psi Inlet, 3,000-9,000 psi set point range, 1/4" MP Ports, Panel Bracket

*The repair kit part number will match the category part number with (RK) at the end.

*The seal kit part number will match the category part number with (SK) at the end.

Single Inlet
10,000 psi Supply
2,000-5,500 psi Regulated



Available Configurations:
SAE, MP

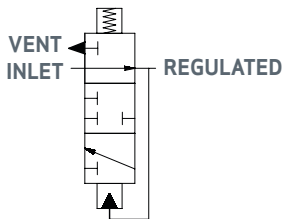
FUNCTIONAL DESIGN SPECIFICATION

Maximum Inlet Pressure	10,000 PSI
Fully Open Flow Coefficient (Cv) Regulated	7
Fully Open Flow Coefficient (Cv) Vent	1
Set Point Range	2,000 - 5,500 psi
Deadband Decrease at 10,000 psi Supply	800 ± 200 psi
Deadband Decrease at 7,500 psi Supply	600 ± 200 psi
Deadband Increase at 10,000 psi Supply	1,000 ± 200 psi
Deadband Increase at 7,500 psi Supply	1,000 ± 200 psi
Fully Open Max Regulated Flow Rate	65-85 GPM
Predicted Cycle Life	10,000 Cycles
Operating Temperature Range	32° F to 150° F
Storage Temperature Range	32° F to 150° F
Acceptable Operating Fluid Types	Water or mineral oil-based control fluid
Mounting Restrictions	None
US Patent	9,657,850 & 10, 739,796

BILL OF MATERIALS

Item Number*	Description	Material
1	ADAPTER, SPRING HOUSING	A276 TP S21800 (NITRONIC 60)
2	HOUSING, SPRING	A511 MT 316/316L
3	CAP, SPRING HOUSING	A276 UNS S21800 (NITRONIC 60)
4	NUT, O-LOCK, .75 NC	A276 TP 316 (316SS)
5	CAP, LOCK, .75 NC	A276 TP 316 (316SS)
6	INSERT, FLOW PORT, BLANK	TUNGSTEN CARBIDE/NICKEL
7	RING, SEAL, SUPPLY	TUNGSTEN CARBIDE/NICKEL
8	SPRING, COMPRESSION	AMS5699 (X-750)
9	SCREW, ADJUSTING, .75 NC	F593 GR2 (T316)
10	PLATE, SPRING	A276 TP 316
11	SPRING, COMPRESSION	A313 TP 316
12	SPRING, COMPRESSION	INCONEL X750
13	PELLET, NYLOK	NYLON

Single Inlet
10,000 psi Supply
2,000-5,500 psi Regulated

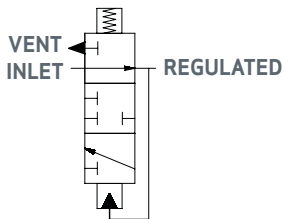


Available Configurations:
SAE, MP

BILL OF MATERIALS

Item Number*	Description	Material
14	SHCS, THREAD-LOCKING, 1/4-20 UNC X 1/2" LG	316/316L
15	O-RING	HNBR
16	O-RING	HNBR
17	O-RING	HNBR
18	18100-026K1	BUNA-N
19	O-RING	HNBR
20	O-RING	HNBR
21	RING, BACKUP	DELTRIN AF
22	WIPER, D-STYLE, 1.500 PLUNGER	POLYURETHANE
23	RING, BACKUP	PEEK
24	RING, BACKUP	PEEK
25	RING, BACKUP	PEEK
26	INSERT, FLOW PORT, SUPPLY & VENT	TUNGSTEN CARBIDE/NICKEL
27	WEARBAND, SEAL CONTAINER	DELTRIN AF
28	BODY	A564 TP 630
29	CARRIER, SEAL	A276 TP S21800 (NITRONIC 60)
30	GUIDE, PLUNGER, 1-1/2"	A276 TP 316 (316 SS)
31	FLANGE, BLANK	A276 TP 316 (316 SS)
32	FLANGE, 3/4" SAE	A276 TP 316 (316 SS)
33	FLANGE, OULET, 3/4" SAE	A276 TP 316 (316 SS)
34	COVER, VENT VALVE	A276 TP 316 (316 SS)
35	LIFTER, VENT VALVE	A564 TP 630 (17-4 PH)

Single Inlet
10,000 psi Supply
2,000-5,500 psi Regulated

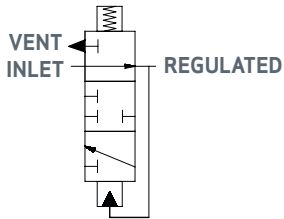


Available Configurations:
SAE, MP

BILL OF MATERIALS

Item Number*	Description	Material
36	SEAT, VENT VALVE	30% CARBON FILLED PEEK
37	POPPET, VENT VALVE	A276 UNS S21800
38	BODY, VENT VALVE	A276 TP 316 (316 SS)
39	SPACER, VENT VALVE	A276 S21800
40	O-RING	HNBR
41	RING, BACKUP	PEEK
42	PLUNGER, 1-1/2"	A276 TP S21800 (NITRONIC 60)
43	O-RING	HNBR
44	RING, BACKUP	PEEK
45	RING, BACKUP	PEEK
46	O-RING	HNBR
47	HOLLOW HEX PLUG, 1/2" SAE	A240 TP 316
48	WEAR BAND, PLUNGER	DELTRIN AF
49	T-SEAL, ROD	CARBOXYLATED NITRILE/ NYLATRON
50	PIN, SPRING, .156" OD, .625" LG	STAINLESS STEEL T420 (UNS S42000)
51	SHCS 1/2-13 UNC X 1.75" LG	A453 GR660
52	SHCS, 1/2-13 UNC X 2-1/2" LG	A453 GR660
53	SHCS 0.500-13 UNC X 1.50 LG	A453 GR660
54	SCHS, 5/16-18 UNC X 3/4" LG	A453 GR 660
55	T-SEAL, ROD	CARBOXYLATED NITRILE/ NYLATRON
56	O-RING	HNBR
57	BALL, 9/16" DIA	A276 TP 316
58	BALL, 1/2" DIA.	A276 TP 316
59	BALL, 1/4" DIA.	NITRILE

Single Inlet
10,000 psi Supply
2,000-5,500 psi Regulated



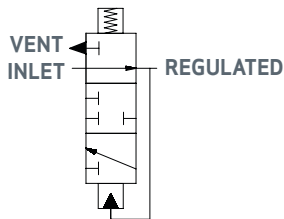
Available Configurations:
SAE, MP

Part Numbers	Description
29231	1" GEN2 Regulator, Damping, 10 ksi, Manual, 3/4" SAE, Single Inlet, 2000-5500 psi range
29238	1" GEN2 Regulator, Damping, 10 ksi, Manual, 1" MP Ports, Single Inlet, 2000-5500 psi range

*The repair kit part number will match the category part number with (RK) at the end.

*The seal kit part number will match the category part number with (SK) at the end.

Single Inlet
10,000 psi Supply
3,000-5,500 psi Regulated



Available Configurations:
SAE, MP

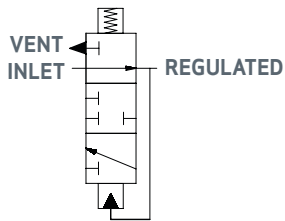
FUNCTIONAL DESIGN SPECIFICATION

Maximum Inlet Pressure	10,000 PSI
Fully Open Flow Coefficient (Cv) Regulated	7
Fully Open Flow Coefficient (Cv) Vent	1
Set Point Range	3,000 - 5,500 psi
Deadband Decrease at 10,000 psi Supply	800 ± 200 psi
Deadband Decrease at 7,500 psi Supply	600 ± 100 psi
Deadband Increase at 10,000 psi Supply	1,000 ± 200 psi
Deadband Decrease at 7,500 psi Supply	1,000 ± 200 psi
Fully Open Max Regulated Flow Rate	65-85 GPM
Predicted Cycle Life	10,000 Cycles
Operating Temperature Range	32° F to 150° F
Storage Temperature Range	32° F to 150° F
Acceptable Operating Fluid Types	Water or mineral oil-based control fluid
Mounting Restrictions	None
US Patent	9,657,850 & 10, 739,796

BILL OF MATERIALS

Item Number*	Description	Material
1	ADAPTER, SPRING HOUSING	A276 TP S21800 (NITRONIC 60)
2	HOUSING, SPRING	A511 MT 316/316L
3	CAP, SPRING HOUSING, 3/4 NC	A276 UNS S21800 (NITRONIC 60)
4	NUT, O-LOCK, 3/4 NC	A276 TP 316 (316SS)
5	CAP, LOCK, 3/4 NC	A276 TP 316 (316SS)
6	INSERT, FLOW PORT, BLANK	TUNGSTEN CARBIDE/NICKEL
7	RING, SEAL, SUPPLY	TUNGSTEN CARBIDE/NICKEL
8	SPRING, COMPRESSION	AMS5699 (X-750)
9	SCREW, ADJUSTING, 3/4 NC	F593 GR2 (T316)
10	PLATE, SPRING, 1-1/4"	A276 TP 316
11	SPRING, COMPRESSION	X-750
12	SPRING, COMPRESSION	INCONEL X750
13	PELLET, NYLON	NYLON

Single Inlet
10,000 psi Supply
3,000-5,500 psi Regulated

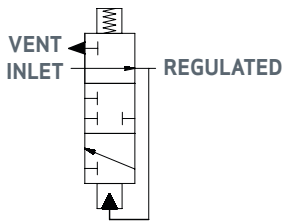


Available Configurations:
SAE, MP

BILL OF MATERIALS

Item Number*	Description	Material
14	SHCS, THREAD-LOCKING, 1/4-20 UNC X 1/2" LG	316/316L
15	O-RING	HNBR
16	O-RING	HNBR
17	O-RING	HNBR
18	O-RING	HNBR
19	O-RING	HNBR
20	O-RING	HNBR
21	WEARBAND, 1-1/4"	PEEK
22	WIPER, D-STYLE, 1-1/4" OD PLUNGER	POLYURETHANE
23	RING, BACKUP	PEEK
24	RING, BACKUP	PEEK
25	RING, BACKUP	PEEK
26	INSERT, FLOW PORT, SUPPLY & VENT	TUNGSTEN CARBIDE/NICKEL
27	WEAR BAND, SEAL CONTAINER	PEEK
28	BODY	A564 TP 630
29	CARRIER, SEAL	A276 TP S21800 (NITRONIC 60)
30	GUIDE, PLUNGER, 1-1/4"	A276 TP 316 (316 SS)
31	FLANGE, BLANK	A276 TP 316 (316 SS)
32	FLANGE, 3/4" SAE	A276 TP 316 (316 SS)
33	FLANGE, OULET, 3/4" SAE	A276 TP 316 (316 SS)
34	COVER, VENT VALVE	A276 TP 316 (316 SS)
35	LIFTER, VENT VALVE	A564 TP 630 (17-4 PH)

Single Inlet
10,000 psi Supply
3,000-5,500 psi Regulated

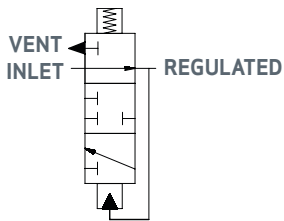


Available Configurations:
SAE, MP

BILL OF MATERIALS

Item Number*	Description	Material
36	SEAT, VENT VALVE	30% CARBON FILLED PEEK
37	POPPET, VENT VALVE	NITRONIC 60
38	BODY, VENT VALVE	A276 TP 316 (316 SS)
39	SPACER, VENT VALVE	A276 S21800 (NITRONIC 60)
40	O-RING	HNBR
41	RING, BACKUP	PEEK
42	PLUNGER, 1-1/4"	A276 TP S21800 (NITRONIC 60)
43	O-RING	HNBR
44	RING, BACKUP	PEEK
45	RING, BACKUP	PEEK
46	O-RING	HNBR
47	HOLLOW HEX PLUG, 1/2" SAE	A240 TP 316
48	WEAR BAND, PLUNGER, 1-1/4"	DELRIN AF
49	T-SEAL, ROD	CARBOXYLATED NITRILE/ NYLATRON
50	PIN, SPRING	STAINLESS STEEL T420 (UNS S42000)
51	SHCS 1/2-13 UNC X 1.75" LG	A453 GR660
52	SHCS, 1/2-13 UNC X 2-1/2" LG	A453 GR660
53	SHCS 0.500-13 UNC X 1.50 LG	A453 GR660
54	SHCS, 5/16-18 UNC X 3/4" LG	A453 GR 660
55	T-SEAL, ROD	CARBOXYLATED NITRILE/ NYLATRON
56	O-RING	HNBR
57	BALL, 9/16" DIA	A276 TP 316
58	BALL, 1/2" DIA.	A276 TP 316
59	BALL, 1/4" DIA.	NITRILE

Single Inlet
10,000 psi Supply
3,000-5,500 psi Regulated



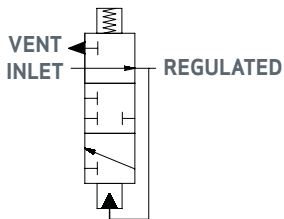
Available Configurations:
SAE, MP

Part Numbers	Description
29230	1" GEN2 Regulator, Damping, 10 ksi, Manual, 3/4" SAE, Single Inlet, 3000-5500 psi range
29239	1" GEN2 Regulator, Damping, 10 ksi, Manual, 1" MP, Single Inlet, 3000-5500 psi range

*The repair kit part number will match the category part number with (RK) at the end.

*The seal kit part number will match the category part number with (SK) at the end.

Dual Inlets
10,000 psi Supply
3,000-5,500 psi Regulated



Available Configurations:
MP

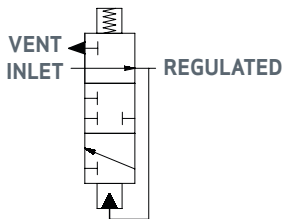
FUNCTIONAL DESIGN SPECIFICATION

Maximum Inlet Pressure	10,000 PSI
Fully Open Flow Coefficient (Cv) Regulated	7
Fully Open Flow Coefficient (Cv) Vent	1
Set Point Range	3,000 - 5,500 psi
Deadband Decrease at 10,000 psi Supply	800 ± 200 psi
Deadband Decrease at 7,500 psi Supply	600 ± 200 psi
Deadband Increase at 10,000 psi Supply	1,000 ± 200 psi
Deadband Decrease at 7,500 psi Supply	1,000 ± 200 psi
Fully Open Max Regulated Flow Rate	130-170 GPM
Predicted Cycle Life	10,000 Cycles
Operating Temperature Range	32° F to 150° F
Storage Temperature Range	32° F to 150° F
Acceptable Operating Fluid Types	Water or mineral oil-based control fluid
Mounting Restrictions	None
US Patent	9,657,850 & 10,739,796

BILL OF MATERIALS

Item Number*	Description	Material
1	ADAPTER, SPRING HOUSING	A276 TP S21800 (NITRONIC 60)
2	HOUSING, SPRING	A511 MT 316/316L
3	CAP, SPRING HOUSING	A276 UNS S21800 (NITRONIC 60)
4	NUT, O-LOCK, .75 NC	A276 TP 316 (316SS)
5	CAP, LOCK, .75 NC	A276 TP 316 (316SS)
6	ADAPTER, 1" MP, FLANGE	A276 TP 316 (316SS)
7	RING, SEAL, SUPPLY	TUNGSTEN CARBIDE/NICKEL
8	SPRING, COMPRESSION	AMS5699 (X-750)
9	SCREW, ADJUSTING, .75 NC	F593 GR2 (T316)
10	PLATE, SPRING	A276 TP 316
11	SPRING, COMPRESSION	AMS5670 (X-750) AMS 5667 (X-750) AMS 5699 (X-750)
12	SPRING, COMPRESSION	INCONEL X750
13	PELLET, NYLOK	NYLON

Dual Inlets
10,000 psi Supply
3,000-5,500 psi Regulated

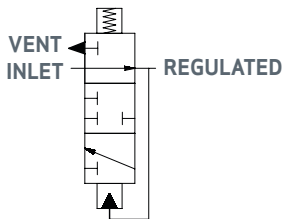


Available Configurations:
MP

BILL OF MATERIALS

Item Number*	Description	Material
14	SHCS, THREAD-LOCKING, 1/4-20 UNC X 1/2" LG	A593 T316
15	O-RING	HNBR
16	O-RING	HNBR
17	O-RING	HNBR
18	O-RING	HNBR
19	O-RING	HNBR
20	O-RING	HNBR
21	WEARBAND, 1-1/4"	DELTRIN AF
22	WIPER, D-STYLE, 1-1/4" OD PLUNGER	POLYURETHANE
23	RING, BACKUP	PEEK
24	RING, BACKUP	PEEK
25	RING, BACKUP	PEEK
26	INSERT, FLOW PORT, SUPPLY & VENT	TUNGSTEN CARBIDE/NICKEL
27	WEAR BAND, SEAL CARRIER	DELTRIN AF
28	BODY	A564 TP 630
29	CARRIER, SEAL	A276 TP S21800 (NITRONIC 60)
30	GUIDE, PLUNGER, 1-1/2"	A276 TP 316 (316 SS)
31	SHCS, 3/8 - 16 UNC - 2-1/4" LG	A453 GR 660
32	FLANGE, 1" MP INLET	A276 TP 316 (316 SS)
33	FLANGE, 1" MP INLET	A276 TP 316 (316 SS)
34	COVER, VENT VALVE	A276 TP 316 (316 SS)
35	LIFTER, VENT VALVE	A564 TP 630 (17-4 PH)
36	SEAT, VENT VALVE	30% CARBON FILLED PEEK
37	POPPET, VENT VALVE	A276 UNS S21800
38	BODY, VENT VALVE	A276 TP 316 (316 SS)
39	SPACER, VENT VALVE	A276 S21800

Dual Inlets
10,000 psi Supply
3,000-5,500 psi Regulated



Available Configurations:
MP

BILL OF MATERIALS

Item Number*	Description	Material
40	O-RING	HNBR
41	RING, BACKUP	PEEK
42	PLUNGER, 1-1/2"	A276 TP S21800 (NITRONIC 60)
43	O-RING	HNBR
44	RING, BACKUP	PEEK
45	RING, BACKUP	PEEK
46	O-RING	HNBR
47	HOLLOW HEX PLUG, 1/2" SAE	A240 TP 316
48	WEAR BAND, PLUNGER	DELTRIN AF
49	T-SEAL, ROD	CARBOXYLATED NITRILE/ NYLATRON
50	PIN, SPRIOL, .156" OD, .625" LG	STAINLESS STEEL T420 (UNS S42000)
51	O-RING	HNBR
52	SHCS, 1/2-13 UNC X 2-1/2" LG	A453 GR660
53	SHCS 0.500-13 UNC X 1.50 LG	A453 GR660
54	SCHS, 5/16-18 UNC X 3/4" LG	A453 GR 660
55	T-SEAL, ROD	CARBOXYLATED NITRILE/ NYLATRON
56	O-RING	HNBR
57	BALL, 9/16" DIA	A276 TP 316
58	BALL, 1/2" DIA.	A276 TP 316
59	BALL, 1/4" DIA.	NITRILE
60	HEX-SHCS 1/2-13 UNC X 2 LG	DUPLEX
61	SHCS, 1/2-13 UNC X 1-1/4" LG	A453 GR 660

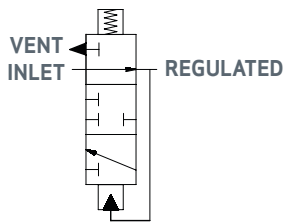
Part Numbers Description

29240	1" GEN2, Regulator, Damping, 10 ksi, Manual, 1" MP Ports, Dual Inlet, 5500-3000 psi range
-------	---

*The repair kit part number will match the category part number with (RK) at the end.

*The seal kit part number will match the category part number with (SK) at the end.

Single Inlet
6,000 psi Supply
3,000-5,000 psi Regulated



Available Configurations:
SAE

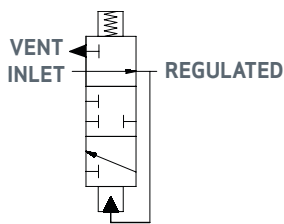
FUNCTIONAL DESIGN SPECIFICATION

Maximum Inlet Pressure Pressure	6,000 psi
Fully Open Flow Coefficient (Cv) Regulated	5
Fully Open Flow Coefficient (Cv) Vent	2
Set Point Range	3,000 - 5,000 psi
Typical Deadband at 5,000 psi Supply	300 ± 100 psi
Fully Open Max Regulated Flow Rate	25 GPM
Predicted Cycle Life	10,000 Cycles
Operating Temperature Range	32°F to 150°F
Storage Temperature Range	32°F to 150°F
Acceptable Operating Fluid Types	Water or mineral oil-based control fluid
Mounting Restrictions	None
US Patent	10,739,796

BILL OF MATERIALS

Item Number*	Description	Material
1	BODY	A564 TP 630 (H1150D)
2	SEAL CONTAINER, 1/2"	A276 TP 316
3	O-RING	HNBR
4	O-RING	HNBR
5	O-RING	HNBR
6	O-RING	HNBR
7	STATIC ID .803	HNBR
8	T-SEAL, ROD	CARBOXYLATED NITRILE/ NYLATRON
9	O-RING	HNBR
10	HYDRO SEAL, VENT	TUNGSTEN CARBIDE 8-10% NICKEL BINDER
11	205018	TUNGSTEN CARBIDE 8-10% NICKEL BINDER
12	BACKUP RING	PEEK
13	PLUNGER GUIDE, 1-1/4", BOLTED, 1/2"	A276 UNS S21800 (NITRONIC 60)
14	PLATE, SPRING	A276 TP 316

Single Inlet
6,000 psi Supply
3,000-5,000 psi Regulated



Available Configurations:
SAE

BILL OF MATERIALS (CONT.)

Item Number*	Description	Material
15	SCREW, ADJUSTING, .75 NC	F593 GR2 (T316)
16	FLANGE, FLOW PLATE 1/2" SAE	A276 TP 316 (316 SS)
17	SPRING, COMPRESSION	AMS5670 (X-750) AMS 5667 (X-750) AMS 5699 (X-750)
18	HOUSING, SPRING	A511 MT 316/316L
19	CAP, SPRING HOUSING	A276 UNS S21800 (NITRONIC 60)
20	NUT, O-LOCK, .75 NC	A276 TP 316 (316SS)
21	CAP, LOCK, .75 NC	A276 TP 316 (316SS)
22	FLANGE, BOTTOM, 10KSI REGULATOR	A276 UNS S21800 (NITRONIC 60)
23	SHCS, 3/8-16 UNC X 1-1/2 LG	A286 GR 660
24	RING, BACKUP	PEEK
25	T-SEAL	SEAL NITRILE N4115A BACKUP NYLATRON
26	BACKUP RING, .625 O.D.	PEEK
27	BACKUP RING, 1.500 O.D.	PEEK
28	BACKUP RING, .473 O.D.	PEEK
29	SPRING, COMPRESSION	X-750
30	BACKUP RING	PEEK
31	FLANGE, REGULATED, 1/2" SAE	A276 TP 316 (316 SS)
32	INSERT, FLOW PORT, SUPPLY & VENT	TUNGSTEN CARBIDE 8-10% NICKEL BINDER
33	SHCS, 3/8 - 16 UNC-2A X 1.00 LG	A 453 GR 660
34	SHCS, THREAD-LOCKING, 1/4-20 UNC X 1/2" LG	316/316L
35	WIPER, D-STYLE, 1-1/4" OD PLUNGER	POLYURETHANE
36	BALL, 1/2" DIA.	A276 TP 316
37	O-RING	HNBR
38	BALL, 9/16" DIA.	A276 TP 316

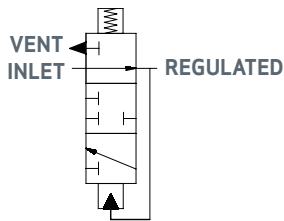
Part Number Description

29241	Valve, Pressure Regulator, GEN2, Manual Spring, 3,000-5,000 psi range, SAE Ports, Single Inlet
-------	--

*The repair kit part number will match the category part number with (RK) at the end.

*The seal kit part number will match the category part number with (SK) at the end.

Single Inlet
10,000 psi Supply
3,000-6,000 psi Regulated



Available Configurations:
MP

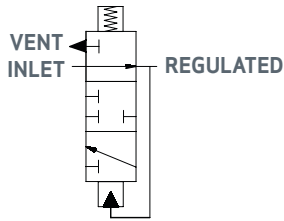
FUNCTIONAL DESIGN SPECIFICATION

Maximum Inlet Pressure Pressure	10,000 psi
Fully Open Flow Coefficient (Cv) Regulated	5
Fully Open Flow Coefficient (Cv) Vent	2
Set Point Range	3,000 - 6,000 psi
Typical Deadband at 10,000 psi Supply	600 ± 100 psi
Typical Deadband at 7,500 psi Supply	450 ± 100 psi
Fully Open Max Regulated Flow Rate	25 GPM
Predicted Cycle Life	10,000 Cycles
Operating Temperature Range	32° F to 150° F
Storage Temperature Range	32° F to 150° F
Acceptable Operating Fluid Types	Water or mineral oil-based control fluid
Mounting Restrictions	None
US Patent	10,739,796

BILL OF MATERIALS

Item Number*	Description	Material
1	BODY	A564 TP 630 (H1150D)
2	SEAL CONTAINER	A276 UNS S21800 (NITRONIC 60)
3	O-RING	HNBR
4	O-RING	HNBR
5	O-RING	HNBR
6	O-RING	HNBR
7	O-RING	HNBR
8	T-SEAL, ROD	CARBOXYLATED NITRILE/ NYLATRON
9	O-RING	HNBR
10	HYDRO SEAL, VENT	TUNGSTEN CARBIDE/NICKEL
11	HYDRO SEAL, SUPPLY	TUNGSTEN CARBIDE/NICKEL
12	BACKUP RING, .375 O.D.	PEEK
13	PLUNGER GUIDE	A276 UNS S21800 (NITRONIC 60)

Single Inlet
10,000 psi Supply
3,000-6,000 psi Regulated



Available Configurations:
MP

BILL OF MATERIALS (CONT.)

Item Number*	Description	Material
14	PLATE, SPRING	A276 TP 316
15	SCREW, ADJUSTING, .75 NC	F593 GR1
16	FLANGE, INLET / VENT 9/16 MP	A276 TP 316 (316 SS)
17	SPRING, COMPRESSION	AMS5670 (X-750) AMS 5667 (X-750) AMS 5699 (X-750)
18	HOUSING, SPRING	A276 TP 316
19	CAP, SPRING HOUSING, .75 NC	A276 UNS S21800 (NITRONIC 60)
20	NUT, O-LOCK, .75 NC	A276 TP 316 (316SS)
21	CAP, LOCK, .75 NC	A276 TP 316 (316SS)
22	FLANGE, BOTTOM	A276 UNS S21800 (NITRONIC 60)
23	SHCS, 3/8-16 UNC X 1-1/2 LG	A286 GR 660
24	RING, BACKUP	PEEK
25	T-SEAL	CARBOXYLATED NITRILE/NYLATRON
26	BACKUP RING, .625 O.D.	PEEK
27	BACKUP RING, 1.500 O.D.	PEEK
28	BACKUP RING, .473 O.D.	PEEK
29	SPRING, COMPRESSION	INCONEL X-750
30	BACKUP RING, 1.490 O.D.	PEEK
31	FLANGE, REGULATED, 9/16MP	A276 TP 316 (316 SS)
32	FLOW PLATE	TUNGSTEN CARBIDE/NICKEL
33	SHCS, 3/8 - 16 UNC-2A X 1.00 LG	A453 GR 660
34	SHCS, THREAD-LOCKING	A593 T316 /NYLON
35	WIPER, D-STYLE	POLYURETHANE
36	BALL, 1/2" DIA.	A276 TP 316
37	O-RING	HNBR
38	BALL, 9/16" DIA	A276 TP 316

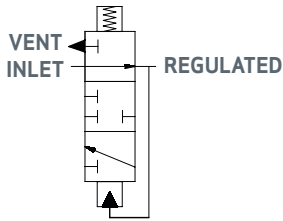
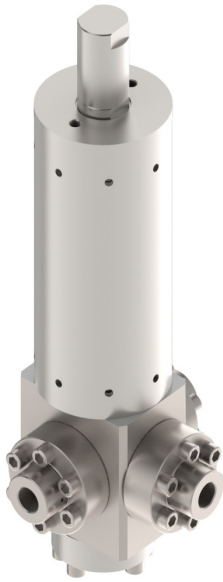
Part Number Description

29192	Valve, Pressure Regulator, GEN2, Manual Spring, 3,000-6,000 psi range, 9/16" MP Ports, Single Inlet
-------	---

*The repair kit part number will match the category part number with (RK) at the end.

*The seal kit part number will match the category part number with (SK) at the end.

Single Inlet
10,000 psi Supply
4,000-8,000 psi Regulated



Available Configurations:
MP

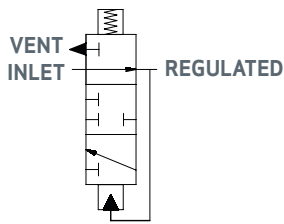
FUNCTIONAL DESIGN SPECIFICATION

Maximum Inlet Pressure Pressure	10,000 psi
Fully Open Flow Coefficient (Cv) Regulated	5
Fully Open Flow Coefficient (Cv) Vent	2
Set Point Range	4,000 - 8,000 psi
Typical Deadband at 10,000 psi Supply	600 ± 100 psi
Typical Deadband at 7,500 psi Supply	450 ± 100 psi
Fully Open Max Regulated Flow Rate	25 GPM
Predicted Cycle Life	10,000 Cycles
Operating Temperature Range	32° F to 150° F
Storage Temperature Range	32° F to 150° F
Acceptable Operating Fluid Types	Water or mineral oil-based control fluid
Mounting Restrictions	None
US Patent	10,739,796

BILL OF MATERIALS

Item Number*	Description	Material
1	BODY	A564 TP 630 (H1150D)
2	SEAL CONTAINER	A276 UNS S21800 (NITRONIC 60)
3	O-RING	HNBR
4	O-RING	HNBR
5	O-RING	HNBR
6	O-RING	HNBR
7	O-RING	HNBR
8	T-SEAL, ROD	CARBOXYLATED NITRILE/ NYLATRON
9	O-RING	HNBR
10	HYDRO SEAL, VENT	TUNGSTEN CARBIDE/NICKEL
11	HYDRO SEAL, SUPPLY	TUNGSTEN CARBIDE/NICKEL
12	BACKUP RING, .375 O.D.	PEEK
13	PLUNGER GUIDE	A276 UNS S21800 (NITRONIC 60)

Single Inlet
10,000 psi Supply
3,000-6,000 psi Regulated



Available Configurations:
MP

BILL OF MATERIALS (CONT.)

Item Number*	Description	Material
14	PLATE, SPRING	A276 TP 316
15	SCREW, ADJUSTING, .75 NC	F593 GR1
16	FLANGE, INLET / VENT 9/16MP	A276 TP 316 (316 SS)
17	SPRING, COMPRESSION	AMS5670 (X-750) AMS 5667 (X-750)
18	HOUSING, SPRING	A276 TP 316
19	CAP, SPRING HOUSING, .75 NC	A276 UNS S21800 (NITRONIC 60)
20	NUT, O-LOCK, .75 NC	A276 TP 316 (316SS)
21	CAP, LOCK, .75 NC	A276 TP 316 (316SS)
22	FLANGE, BOTTOM	A276 UNS S21800 (NITRONIC 60)
23	SHCS, 3/8-16 UNC X 1-1/2 LG	A286 GR 660
24	RING, BACKUP	PEEK
25	T-SEAL	CARBOXYLATED NITRILE/NYLATRON
26	BACKUP RING, .625 O.D.	PEEK
27	BACKUP RING, 1.500 O.D.	PEEK
28	BACKUP RING, .473 O.D.	PEEK
29	SPRING, COMPRESSION	INCONEL X-750
30	BACKUP RING, 1.490 O.D.	PEEK
31	FLANGE, REGULATED, 9/16MP	A276 TP 316 (316 SS)
32	FLOW PLATE	TUNGSTEN CARBIDE/NICKEL
33	SHCS, 3/8 - 16 UNC-2A X 1.00 LG	A453 GR 660
34	SHCS, THREAD-LOCKING	A593 T316 /NYLON
35	WIPER, D-STYLE	POLYURETHANE
36	BALL, 1/2" DIA.	A276 TP 316
37	O-RING	HNBR
38	BALL, 9/16" DIA	A276 TP 316

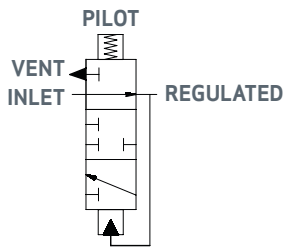
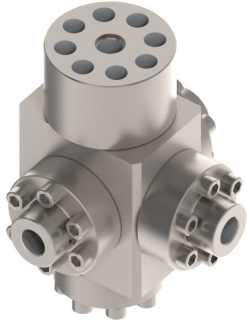
Part Number Description

29197	Valve, Pressure Regulator, GEN2, Manual Spring, 4,000-8,000 psi range, 9/16" MP Ports, Single Inlet
-------	--

*The repair kit part number will match the category part number with (RK) at the end.

*The seal kit part number will match the category part number with (SK) at the end.

Single Inlet
10,000 psi Supply
1,000-8,000 psi Regulated



Available Configurations:
MP

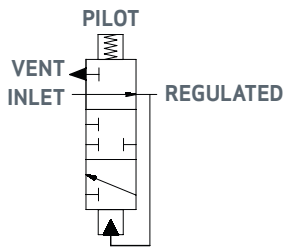
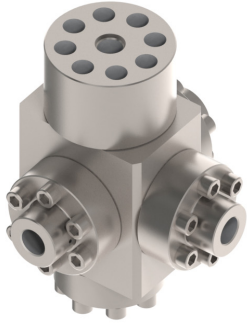
FUNCTIONAL DESIGN SPECIFICATION

Maximum Inlet Pressure Pressure	10,000 psi
Fully Open Flow Coefficient (Cv) Regulated	5
Fully Open Flow Coefficient (Cv) Vent	2
Set Point Range	1,000 - 8,000 psi
Typical Deadband at 10,000 psi Supply	600 ± 100 psi
Typical Deadband at 7,500 psi Supply	450 ± 100 psi
Fully Open Max Regulated Flow Rate	25 GPM
Predicted Cycle Life	10,000 Cycles
Operating Temperature Range	32° F to 150° F
Storage Temperature Range	32° F to 150° F
Acceptable Operating Fluid Types	Water or mineral oil-based control fluid
Mounting Restrictions	None
US Patent	10,739,796

BILL OF MATERIALS

Item Number*	Description	Material
1	BODY	A564 TP 630 (H1150D)
2	SEAL CONTAINER	A276 UNS S21800 (NITRONIC 60)
3	O-RING	HNBR
4	O-RING	HNBR
5	O-RING	HNBR
6	O-RING	HNBR
7	O-RING	HNBR
8	T-SEAL, ROD	CARBOXYLATED NITRILE/ NYLATRON
9	HYDRO SEAL, VENT	TUNGSTEN CARBIDE/NICKEL
10	HYDRO SEAL, SUPPLY	TUNGSTEN CARBIDE/NICKEL
11	BACKUP RING, .375 O.D.	PEEK
12	CYLINDER, HYDRAULIC PILOT, 1/2" SAE	A276 TP 316 (316 SS)
13	FLANGE, INLET/VENT 9/16 MP	A276 TP 316 (316 SS)

Single Inlet
10,000 psi Supply
1,000-8,000 psi Regulated



Available Configurations:
MP

BILL OF MATERIALS (CONT.)

Item Number*	Description	Material
14	FLANGE, BOTTOM	A276 UNS S21800 (NITRONIC 60)
15	SHCS, 3/8-16 UNC X 1-1/2 LG	A286 GR 660
16	BACKUP RING	PEEK
17	WEARBAND, HYDRAULIC PILOT	DELRIN AF
18	BACKUP RING, 1.500 O.D.	PEEK
19	BACKUP RING, .473 O.D.	PEEK
20	SPRING, COMPRESSION	INCONEL X-750
21	BACKUP RING, 1.490 O.D.	PEEK
22	FLANGE, REGULATED, 9/16MP	A276 TP 316 (316 SS)
23	FLOW PLATE	TUNGSTEN CARBIDE/ NICKEL
24	SHCS, 3/8 - 16 UNC-2A X 1.00 LG	A453 GR660
25	SHCS, THREAD-LOCKING	A593 T316 / NYLON
26	HEX PLUG, 3/16" SAE	T316 / BUNA
27	O-RING	HNBR

Part Number	Description
29193	Valve, Pressure Regulator, GEN2, Manual Spring, 1,000-8,000 psi range, 9/16" MP Ports, Single Inlet

*The repair kit part number will match the category part number with (RK) at the end.

*The seal kit part number will match the category part number with (SK) at the end.

Gilmore
1231 Lumpkin Road
Houston, TX 77043
+1 713 468 8778

INFO@gilmore.com
www.gilmore.com