

PNEU-HYDRO CATALOG



Gilmore's line of Pneu-Hydro flow control products provide cost effective solutions to the demands of high-spec hydraulic systems.

Designed primarily for the energy sector, these versatile valves can be used in a wide range of applications and are designed and manufactured with the same quality for which Gilmore is known. The following list summarizes the product families within the Pneu-Hydro line.



Check Valves

Gilmore's Pneu-Hydro Check Valves seal bubble-tight, even without back pressure. Known for durability and reliable performance, these check valves provide a smooth flow-path with minimum resistance.



Right Angle Relief Valves

Gilmore's Pneu-Hydro Right Angle Relief Valves remain bubble-tight up to cracking pressure and reseal bubble tight. The external setting adjustment is particularly useful in applications where changes are required.



Inline Relief Valves

Gilmore's Pneu-Hydro Inline Relief Valves remain bubble-tight up to cracking pressure and reseal bubble tight. Cracking pressure is reliable, repeatable, and easily set by an internal adjustment, which is tamper-proof once the valve is installed in the system.



Miniature Relief Valves

Gilmore's Pneu-Hydro Miniature Relief Valves provide zero leakage up to cracking pressure and reseal bubble tight. Adjustments are insensitive to temperature variations. Available in vent-to-connection or vent-to-atmosphere configurations.



Quick Vent Valves

Gilmore's Pneu-Hydro Quick-Vent Valves are designed to provide high flow rates from an actuator when supply pressure is vented, while also providing reliable and leak free performance under normal operation. This functionality reduces restrictions on actuators, providing more consistent and predictable hydraulic performance.

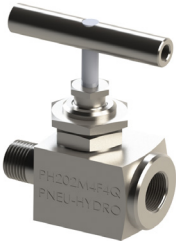
Gilmore's line of Pneu-Hydro flow control products provide cost effective solutions to the demands of high-spec hydraulic systems.

Designed primarily for the energy sector, these versatile valves can be used in a wide range of applications and are designed and manufactured with the same quality for which Gilmore is known. The following list summarizes the product families within the Pneu-hydro line.



Excess Flow Check Valves

Gilmore's Pneu-Hydro Excess Flow Check Valves are designed to contain pressurized fluids in the event of catastrophic downstream failure. The spring-loaded poppet is held open during normal operation, permitting free flow in both directions, and automatically closes once a leak is detected and a pressure differential threshold is reached.



Hand Valves

Gilmore's Pneu-Hydro Hand Valves provide durable and precise flow control in a compact design. The Teflon stem packing and pintle swivel help to prevent contamination and washout while also ensuring reliable and effortless operation.



Interface Valves

Gilmore's Pneu-Hydro Interface Valves provide reliable pneumatic control over hydraulic functions up to 10,000 psi. These three-way two position valves are available in both normally open and normally closed versions.



H-2 High-Low Pilot Valves

Gilmore's Pneu-Hydro HL-2 High-Low Pilot Valves are used to sense flow-line pressure and protect equipment from abnormal conditions. These adjustable valves can function as normally closed or normally open, controlling both pneumatic and hydraulic systems.



H-2 High-Low Manifold Pilot Valve Assembly

Gilmore's Pneu-Hydro Pilot Valve Manifold assemblies utilize a pair of adjustable pilot valves to monitor flow line pressure. When a high or low limit is sensed, the assembly blocks and bleeds control pressure to provide fail safe shutdown of the system.

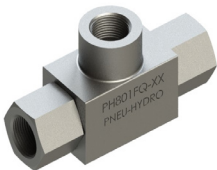
Gilmore's line of Pneu-hydro flow control products provide cost effective solutions to the demands of high-spec hydraulic systems.

Designed primarily for the energy sector, these versatile valves can be used in a wide range of applications and are designed and manufactured with the same quality for which Gilmore is known. The following list summarizes the product families within the Pneu-hydro line.



Pneumatic Control Valves

Gilmore's Pneu-Hydro Pneumatic Control Valves provide reliable control with pilot or manual push button control. These 3-way, 2-position valves are designed to select supply or vent to a function when actuated.



Shuttle Valves

Gilmore's Pneu-Hydro Shuttle Valves are used in systems where redundant or multiple supply sources are required. A simple ball and elastomeric seat design provides effective and reliable passive switching.



Sand Probe Valves

Gilmore's Pneu-Hydro Sand Probe Valves provide a visual indication and a control system signal once a predetermined level of erosion has occurred in a flowline. These 2-way, 2-position, normally open valves are piloted by flowline pressure entering the valves through an eroded opening in a sacrificial probe.



Inline Filters

Gilmore's Pneu-Hydro Inline Filters provide an effective and economic solution for filtering control system fluid. These universal filters are equipped with replaceable elements available in several particulate size ranges.



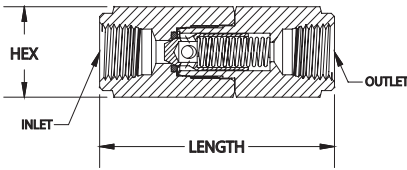
Pressure Indicators

Gilmore's Pneu-Hydro Pressure Indicators provide a visual indication for the presence of pneumatic pressure.



Pneu-Hydro O-ring Tool Kit

Gilmore's Pneu-Hydro kit of specifically designed tools for installing and extracting O-rings. Tools are invaluable to engineers, technicians and assembly personnel working on pneumatic, hydraulic and other fluid devices. They are fabricated from corrosion resistant materials for compatibility with most fluids and may be used in clean-room applications.



Gilmore's Pneu-Hydro check valves are constructed of 316 stainless steel for strength and corrosion resistance and meet the requirements of NACE MRO175. The poppet is spring loaded for positive operation regardless of orientation.

Back pressure and spring loads are carried by a metal stop rather than the O-Ring to ensure long seal life and minimum maintenance.

Features & Benefits

- Smooth, chatter-free performance
- Reliable and repeatable cracking and reseating pressures
- Additional materials available upon request
- Standard seal materials offered in Buna-N and Viton

FUNCTIONAL DESIGN SPECIFICATION

Maximum Allowable Working Pressure	10,000 psi
Flow Coefficient (Cv) - 1/4"	0.55
Flow Coefficient (Cv) - 3/8" & 1/2"	1.3
Operating Temperature Range - Buna N Seals	-65° F to -180° F
Operating Temperature Range - Viton Seals	-20° F to 400° F

GILMORE PART NUMBERS

				Dimensions (in)	
Buna-N	Viton	Inlet	Outlet	L	Hex
PH301F4Q	PH301F4Q-V	1/4" NPTF	1/4" NPTF	2.28	0.75
PH301M4Q	PH301M4Q-V	1/4" NPTM	1/4" NPTM	2.34	0.75
PH301M4F4Q	PH301M4F4Q-V	1/4" NPTM	1/4" NPTF	2.25	0.75
PH301F6Q	PH301F6Q-V	3/8" NPTF	3/8" NPTF	3.13	1.06
PH301M8Q	PH301M8Q-V	1/2" NPTM	1/2" NPTM	3.63	1.06

Note: All models are designed for 5 psi cracking pressure. To order valves with the optional pressures shown below, add the indicated suffix number to the basic model number.

Crack pressure suffix number for Buna-N

2 psi	-1 (1/4" only)
10 psi	-2
25 psi	-3

Crack pressure suffix number for Viton

2 psi	-1V (1/4" only)
10 psi	-2V
25 psi	-3V

REPAIR KITS

Repair Kits for Valves with Buna-N Seals 1/4" NPT

Repair Kit Part Number	Valve Part Number	Valve Cracking Pressure Range
PH613396	PH301F4Q, PH301M4Q, PH301M4F4Q	5 psi
PH613396-2	PH301F4Q-1, PH301M4Q-1, PH301M4F4Q-1	2 psi
PH613396-10	PH301F4Q-2, PH301M4Q-2, PH301M4F4Q-2	10 psi
PH613396-25	PH301F4Q-3, PH301M4Q-3, PH301M4F4Q-3	25 psi

Repair Kits for Valves with Viton Seals 1/4" NPT

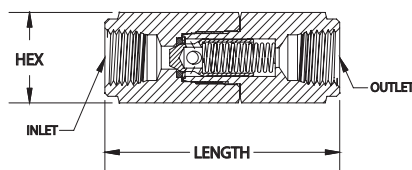
Repair Kit Part Number	Valve Part Number	Valve Cracking Pressure Range
PH613396-V	PH301F4Q-V, PH301M4Q-V, PH301M4F4Q-V	5 psi
PH613396-2V	PH301F4Q-1V, PH301M4Q-1V, PH301M4F4Q-1V	2 psi
PH613396-10V	PH301F4Q-2V, PH301M4Q-2V, PH301M4F4Q-2V	10 psi
PH613396-25V	PH301F4Q-3V, PH301M4Q-3V, PH301M4F4Q-3V	25 psi

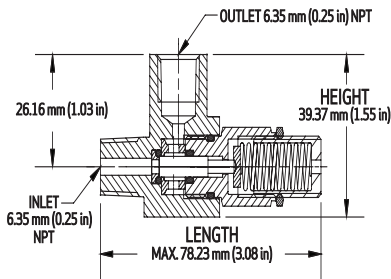
Repair Kits with Buna-N Seals 3/8" & 1/2" NPT

Repair Kit Part Number	Valve Part Number	Valve Cracking Pressure Range
PH613581	PH301F6Q, PH301M8Q	2-5 psi
PH613581-10	PH301F6Q-2, PH301M8Q-2	10 psi
PH613581-25	PH301F6Q-3, PH301M8Q-3	25 psi

Repair Kits with Viton Seals 3/8" & 1/2" NPT

Repair Kit Part Number	Valve Part Number	Valve Cracking Pressure Range
PH613581-V	PH301F6Q-V, PH301M8Q-V	2-5 psi
PH613581-10V	PH301F6Q-2V, PH301M8Q-2V	10 psi
PH613581-25V	PH301F6Q-3V, PH301M8Q-3V	25 psi





Gilmore's Pneu-Hydro Right Angle Relief Valves are pressure balanced internally and pressure referenced to atmosphere. This yields insensitivity to downstream pressure and permits the valve to also be used as a back pressure regulator.

The valve seals against an elastomeric seat and utilizes a metallic positive stop to carry the spring load, prolonging seal life and ensuring reliable pressure relieving performance. The design provides full flow at a very small rise above cracking pressure.

Features & Benefits

- Wide series of available relief pressure set ranges
- Precise factory set relief pressure per customer specification
- Externally adjustable
- Can be used as a back pressure regulator
- Smooth, chatter-free performance
- Reliable and repeatable cracking and reseating pressures
- 316 stainless steel construction
- Standard seal materials offered in Buna-N and Viton
- Valve Weight = .29 lb

FUNCTIONAL DESIGN SPECIFICATION

Maximum Allowable Working Pressure	10,000 psi
Flow Coefficient (Cv) – set range 100 – 5,000 psi	0.25
Flow Coefficient (Cv) – set range 5,000 – 10,000 psi	0.09
Operating Temperature Range – Buna N Seals	-65° F to -180° F
Operating Temperature Range – Viton Seals	-20° F to 400° F
Connection - Inlet	1/4" Male NPT

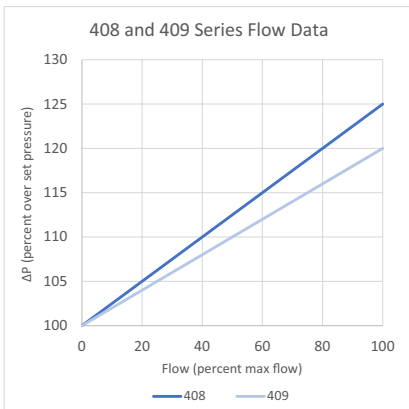


TABLE A: SET PRESSURE TOLERANCES

Setting (psi)	Tolerance
1000+	±5% of set pressure
500-999	±50
250-499	±25
0-249	±10

TABLE B: RESEAT PRESSURE TOLERANCES

Setting (psi)	Tolerance
1000+	90%
250-999	80%
0-249	50%

"Pressure setting accuracy is determined by the value of the pressure setting. Please see Table A for details. EXAMPLE: A set of valves ordered at 950 psi would all be set to open between 900 psi and 1000 psi, targeting 950psi."

"Reseat pressure is determined by the set pressure of the valve. Please see Table B for more details. EXAMPLE: A set of valves ordered with a set pressure of 1500 psi will be tested to verify that they all reseat at or above 1350 psi, 90% of 1500"

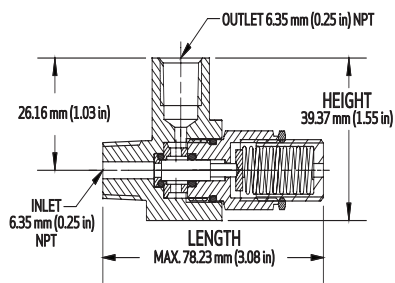
GILMORE PART NUMBERS

CDI PART NUMBERS

1/4" Female NPT Out let				Operating Pressure Ranges
Buna-N	Viton	Buna-N	Viton	
PH408M4F4Q-1	PH408M4F4Q-1V	PH408M4F4Q-1-0A(psi)	PH408M4F4Q-1V-0A(psi)	100-150 psi (6.9 - 10.3 bar)
PH408M4F4Q-2	PH408M4F4Q-2V	PH408M4F4Q-2-0A(psi)	PH408M4F4Q-2V-0A(psi)	150-250 psi (10.3 - 17.2 bar)
PH408M4F4Q-3	PH408M4F4Q-3V	PH408M4F4Q-3-0A(psi)	PH408M4F4Q-3V-0A(psi)	250-350 psi (17.2 - 24.1 bar)
PH408M4F4Q-4	PH408M4F4Q-4V	PH408M4F4Q-4-0A(psi)	PH408M4F4Q-4V-0A(psi)	350-600 psi (24.1 - 41.4 bar)
PH408M4F4Q-5	PH408M4F4Q-5V	PH408M4F4Q-5-0A(psi)	PH408M4F4Q-5V-0A(psi)	600-900 psi (41.4 - 62.0 bar)
PH408M4F4Q-6	PH408M4F4Q-6V	PH408M4F4Q-6-0A(psi)	PH408M4F4Q-6V-0A(psi)	900-1,500 psi (62.0 - 103.4 bar)
PH408M4F4Q-7	PH408M4F4Q-7V	PH408M4F4Q-7-0A(psi)	PH408M4F4Q-7V-0A(psi)	1,500-3,000 psi (103.4-206.8 bar)
PH408M4F4Q-8	PH408M4F4Q-8V	PH408M4F4Q-8-0A(psi)	PH408M4F4Q-8V-0A(psi)	3,000-5,000 psi (206.8-344.7 bar)
PH409M4F4Q	PH409M4F4Q-V	PH409M4F4Q-0A(psi)	PH409M4F4Q-V-0A(psi)	5,000-10,000 psi (344.7-689.5 bar)

1/4" Male NPT Out let				Operating Pressure Ranges
Buna-N	Viton	Buna-N	Viton	
PH408M4Q-1	PH408M4Q-1V	PH408M4Q-1-0A(psi)	PH408M4Q-1V-0A(psi)	100-150 psi (6.9 - 10.3 bar)
PH408M4Q-2	PH408M4Q-2V	PH408M4Q-2-0A(psi)	PH408M4Q-2V-0A(psi)	150-250 psi (10.3 - 17.2 bar)
PH408M4Q-3	PH408M4Q-3V	PH408M4Q-3-0A(psi)	PH408M4Q-3V-0A(psi)	250-350 psi (17.2 - 24.1 bar)
PH408M4Q-4	PH408M4Q-4V	PH408M4Q-4-0A(psi)	PH408M4Q-4V-0A(psi)	350-600 psi (24.1 - 41.4 bar)
PH408M4Q-5	PH408M4Q-5V	PH408M4Q-5-0A(psi)	PH408M4Q-5V-0A(psi)	600-900 psi (41.4 - 62.0 bar)
PH408M4Q-6	PH408M4Q-6V	PH408M4Q-6-0A(psi)	PH408M4Q-6V-0A(psi)	900-1,500 psi (62.0 - 103.4 bar)
PH408M4Q-7	PH408M4Q-7V	PH408M4Q-7-0A(psi)	PH408M4Q-7V-0A(psi)	1,500-3,000 psi (103.4-206.8 bar)
PH408M4Q-8	PH408M4Q-8V	PH408M4Q-8-0A(psi)	PH408M4Q-8V-0A(psi)	3,000-5,000 psi (206.8-344.7 bar)
PH409M4Q	PH409M4Q-V	PH409M4Q-0A(psi)	PH409M4Q-V-0A(psi)	5,000-10,000 psi (344.7-689.5 bar)

*Set pressure client requests replaces (psi) Ex. PH408M4Q-1-0A125



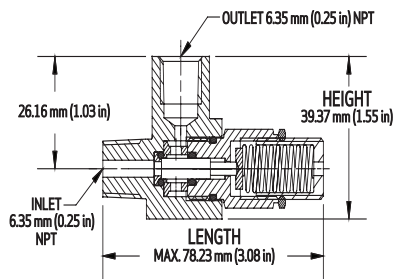
REPAIR KITS

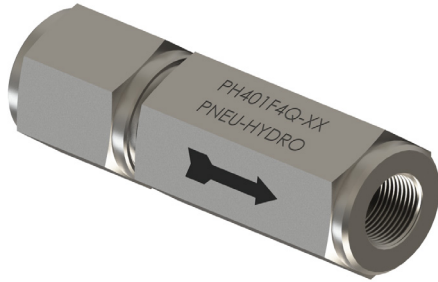
Repair Kits with Buna-N Seals 1/4" NPT

Repair Kit Part Number	Valve Part Numbers	Valve Set Pressure Range	Spring Color
PH613369-1	PH408M4F4Q-1, PH408M4Q-1	100 - 150 psi (6.9 - 10.3 bar)	Violet
PH613369-2	PH408M4F4Q-2, PH408M4Q-2	150 - 250 psi (10.3 - 17.2 bar)	Black
PH613369-3	PH408M4F4Q-3, PH408M4Q-3	250 - 350 psi (17.2 - 24.1 bar)	Yellow
PH613369-4	PH408M4F4Q-4, PH408M4Q-4	350 - 600 psi (24.1 - 41.4 bar)	Yellow
PH613369-5	PH408M4F4Q-5, PH408M4Q-5	600 - 900 psi (41.4 - 62.0 bar)	Dark Green
PH613369-6	PH408M4F4Q-6, PH408M4Q-6	900 - 1,500 psi (62.0 - 103.4 bar)	Dark Green
PH613369-7	PH408M4F4Q-7, PH408M4Q-7	1,500 - 3,000 psi (103.4 - 206.8 bar)	Dark Blue
PH613369	PH408M4F4Q-8, PH408M4Q-8	3,000 - 5,000 psi (206.8 - 344.7 bar)	Red
PH613416	PH409M4F4Q, PH409M4Q	5,000 - 10,000 psi (344.7 - 689.5 bar)	Light Orange

Repair Kits with Viton Seals 1/4" NPT

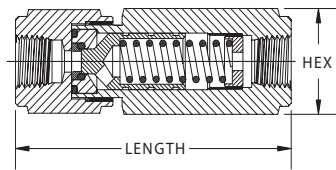
Repair Kit Part Number	Valve Part Numbers	Valve Set Pressure Range	Spring Color
PH613369-1V	PH408M4F4Q-1V, PH408M4Q-1V	100 - 150 psi (6.9 - 10.3 bar)	Violet
PH613369-2V	PH408M4F4Q-2V, PH408M4Q-2V	150 - 250 psi (10.3 - 17.2 bar)	Black
PH6 13369-3V	PH408M4F4Q-3V, PH408M4Q-3V	250 - 350 psi (17.2 - 24.1 bar)	Yellow
PH6 13369-4V	PH408M4F4Q-4V, PH408M4Q-4V	350 - 600 psi (24.1 - 41.4 bar)	Yellow
PH6 13369-5V	PH408M4F4Q-5V, PH408M4Q-5V	600 - 900 psi (41.4 - 62.0 bar)	Dark Green
PH613369-6V	PH408M4F4Q-6V, PH408M4Q-6V	900 - 1,500 psi (62.0 - 103.4 bar)	Dark Green
PH613369-7V	PH408M4F4Q-7V, PH408M4Q-7V	1,500 - 3,000 psi (103.4 - 206.8 bar)	Dark Blue
PH61 3369-V	PH408M4F4Q-8V, PH408M4Q-8V	3,000 - 5,000 psi (206.8 - 344.7 bar)	Red
PH61 3416-V	PH409M4F4Q-V, PH409M4Q-V	5,000 - 10,000 psi (344.7 - 689.5 bar)	Light Orange





Gilmore’s Pneu-Hydro Inline Relief Valves provide reliable performance in a compact package with a wide range of available relief set points.

Utilizing an elastomeric O-ring seal on the poppet and a metallic positive stop to carry the spring pre-load, this simple design provides reliable settings, predictable performance, and prolonged service life. The standard valve is constructed from 316 stainless steel, delivering superior strength and durability for use in highly corrosive environments.



Features & Benefits

- Wide set range from a single part number
- Precise factory set relief pressure per customer specification
- Relief pressure easily set by internal adjustment
- Tamper proof adjustment
- Smooth, chatter-free performance
- Reliable and repeatable cracking and reseating pressures
- Standard seal materials offered in Buna-N and Viton

FUNCTIONAL DESIGN SPECIFICATION

Operating Pressure Range - Type 401	50 - 3,000 psi
Operating Pressure Range - Type 402	3,000 - 10,000 psi
Operating Temperature Range - Buna N Seals	-65° F to -180° F
Operating Temperature Range - Viton Seals	-20° F to 400° F

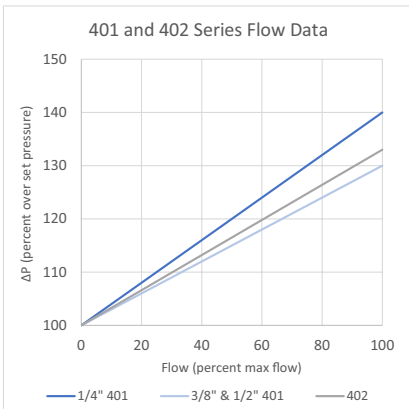


TABLE A: SET PRESSURE TOLERANCES

Setting (psi)	Tolerance
1000+	±5% of set pressure
500-999	±50
250-499	±25
0-249	±10

TABLE B: RESEAT PRESSURE TOLERANCES

Setting (psi)	Tolerance
1000+	90%
250-999	80%
0-249	50%

Pressure setting accuracy is determined by the value of the pressure setting. Please see Table A for details. EXAMPLE: A set of valves ordered at 950 psi would all be set to open between 900 psi and 1000 psi, targeting 950psi.

Reseat pressure is determined by the set pressure of the valve. Please see Table B for more details. EXAMPLE: A set of valves ordered with a set pressure of 1500 psi will be tested to verify that they all reseat at or above 1350 psi, 90% of 1500.

GILMORE PART NUMBERS

CDI PART NUMBERS

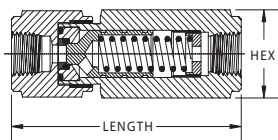
1/ 4" Female NPT Out let				Operating Pressure Ranges
Buna-N	Viton	Buna-N	Viton	
PH401F4Q-1	PH401F4Q-1V	PH401F4Q-1-0A(psi)	PH401F4Q-1V-0A(psi)	50-250 psi (3.4 - 17.2 bar)
PH401F4Q-2	PH401F4Q-2V	PH401F4Q-2-0A(psi)	PH401F4Q-2V-0A(psi)	250-600 psi (17.2 - 41.4 bar)
PH401F4Q-3	PH401F4Q-3V	PH401F4Q-3-0A(psi)	PH401F4Q-3V-0A(psi)	500-1,750 psi (34.4 - 120.6 bar)
PH401F4Q-4	PH401F4Q-4V	PH401F4Q-4-0A(psi)	PH401F4Q-4V-0A(psi)	1,500-3,000 psi (103.4 - 206.8 bar)
PH402F4Q-4	PH402F4Q-4V	PH402F4Q-4-0A(psi)	PH402F4Q-4-0A(psi)	3,000-10,000 psi (206.8 - 689.4 bar)
3/8" Female NPT Out let				Operating Pressure Ranges
Buna-N	Viton	Buna-N	Viton	
PH401F6Q-1	PH401F6Q-1V	PH401F6Q-1-0A(psi)	PH401F6Q-1V-0A(psi)	50-250 psi (3.4 - 17.2 bar)
PH401F6Q-2	PH401F6Q-2V	PH401F6Q-2-0A(psi)	PH401F6Q-2V-0A(psi)	250-600 psi (17.2 - 41.4 bar)
PH401F6Q-3	PH401F6Q-3V	PH401F6Q-3-0A(psi)	PH401F6Q-3V-0A(psi)	500-1,750 psi (34.4 - 120.6 bar)
PH401F6Q-4	PH401F6Q-4V	PH401F6Q-4-0A(psi)	PH401F6Q-4V-0A(psi)	1,500-3,000 psi (103.4 - 206.8 bar)
1/ 2" Female NPT Out let				Operating Pressure Ranges
Buna-N	Viton	Buna-N	Viton	
PH401F8Q-1	PH401F8Q-1V	PH401F8Q-1-0A(psi)	PH401F8Q-1V-0A(psi)	50-250 psi (3.4 - 17.2 bar)
PH401F8Q-2	PH401F8Q-2V	PH401F8Q-2-0A(psi)	PH401F8Q-2V-0A(psi)	250-600 psi (17.2 - 41.4 bar)
PH401F8Q-3	PH401F8Q-3V	PH402F8Q-3-0A(psi)	PH401F8Q-3V-0A(psi)	500-1750 psi (34.4 - 120.6 bar)
PH401F8Q-4	PH401F8Q-4V	PH402F8Q-4-0A(psi)	PH401F8Q-4V-0A(psi)	1,500-3,000 psi (103.4 - 206.8 bar)
PH402F8Q-4	PH402F8Q-4V	PH402F8Q-4-0A(psi)	PH402F8Q-4V-0A(psi)	3,000-10,000 psi (206.8 - 689.4 bar)
1/ 4" Male NPT Out let				Operating Pressure Ranges
Buna-N	Viton	Buna-N	Viton	
PH401M4Q-1	PH401M4Q-1V	PH401M4Q-1-0A(psi)	PH401M4Q-1V-0A(psi)	50-250 psi (3.4 - 17.2 bar)
PH401M4Q-2	PH401M4Q-2V	PH401M4Q-2-0A(psi)	PH401M4Q-2V-0A(psi)	250-600 psi (17.2 - 41.4 bar)
PH401M4Q-3	PH401M4Q-3V	PH401M4Q-3-0A(psi)	PH401M4Q-3V-0A(psi)	500-1750 psi (34.4 - 120.6 bar)
PH401M4Q-4	PH401M4Q-4V	PH401M4Q-4-0A(psi)	PH401M4Q-4V-0A(psi)	1,500-3,000 psi (103.4 - 206.8 bar)

* (psi) references the set pressure requested on order (EX: PH401F4Q-1-0A125) for 125 psi

REPAIR KITS

Kit Part Number	Product Name
PH613652-#	PH401F6Q-#, PH401F8Q-#
PH613652-#V	PH401F6Q-#V, PH401F8Q-#V
PH613760	PH402F4Q, PH402F8Q
PH613760-V	PH402F4Q-V, PH402F8Q-V
PH614114-#	PH401F4Q-#, PH401M4Q-#
PH614114-#V	PH401F4Q-#V, PH401M4Q-#V

* # corresponds to pressure range (EX: "1"=50-250 psi)



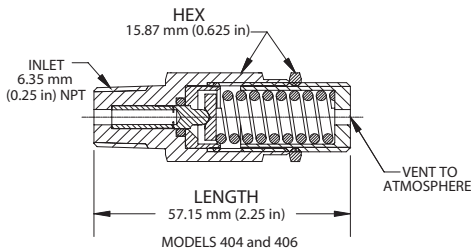
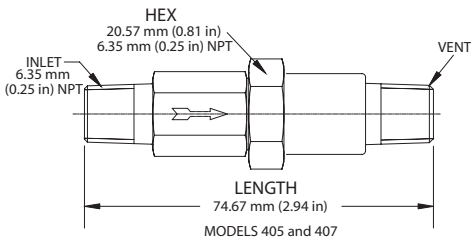


Gilmore’s Pneu-Hydro Miniature Relief Valves provide low flow, reliable pressure relief with options for ported or atmospheric vent.

The standard valve is constructed from 316 stainless steel, delivering superior strength and durability for use in highly corrosive environments.

Features & Benefits

- Wide set range from a single part number
- Precise factory set relief pressure per customer specification
- Relief pressure easily set by external adjustment
- Smooth, chatter-free performance
- Reliable and repeatable cracking and reseating pressures
- Standard seal materials offered in Buna-N and Viton
- Ported vent models (PH405 and PH407) have 1,000 psi rated vent ports



FUNCTIONAL DESIGN SPECIFICATION

Operating Pressure Range - Type 404 and 405	50 - 5,000 psi
Operating Pressure Range - Type 406 and 407	5,440 - 10,000 psi
Connection - Inlet	1/4" NPT M
Connection - Vent (Type 405 and 407)	1/4" NPT M
Operating Temperature Range - Buna N Seals	-65° F to -180° F
Operating Temperature Range - Viton Seals	-20° F to -400° F
Cv - Type 404, 405, 406, 407	0.035

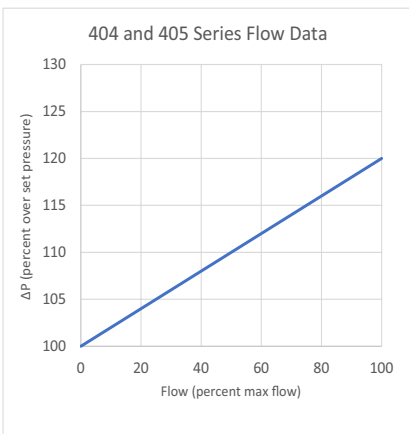


TABLE A: SET PRESSURE TOLERANCES

Setting (psi)	Tolerance
1000+	±5% of set pressure
500-999	±50
250-499	±25
0-249	±10

TABLE B: RESEAT PRESSURE TOLERANCES

Setting (psi)	Tolerance
1000+	90%
250-999	80%
0-249	50%

“Pressure setting accuracy is determined by the value of the pressure setting. Please see Table A for details. EXAMPLE: A set of valves ordered at 950 psi would all be set to open between 900 psi and 1000 psi, targeting 950psi.”

“Reseat pressure is determined by the set pressure of the valve. Please see Table B for more details. EXAMPLE: A set of valves ordered with a set pressure of 1500 psi will be tested to verify that they all reseat at or above 1350 psi, 90% of 1500.”

GILMORE PART NUMBERS

CDI PART NUMBERS

1/4" Male NPT Out let

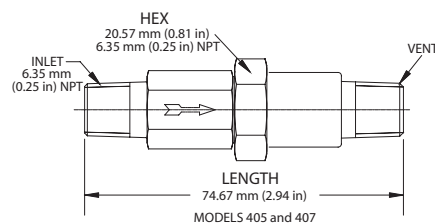
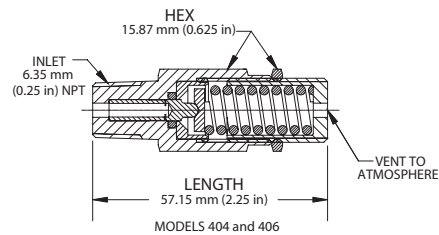
Operating Pressure Ranges

Buna-N	Viton	Buna-N	Viton	Operating Pressure Ranges
PH404M4Q-1	PH404M4Q-1V	PH404M4Q-1-0A(psi)	PH404M4Q-1V-0A(psi)	100-150 psi (6.9 - 10.3 bar)
PH404M4Q-2	PH404M4Q-2V	PH404M4Q-2-0A(psi)	PH404M4Q-2V-0A(psi)	150-250 psi (10.3 - 17.2 bar)
PH404M4Q-3	PH404M4Q-3V	PH404M4Q-3-0A(psi)	PH404M4Q-3V-0A(psi)	250-350 psi (17.2 - 24.1 bar)
PH404M4Q-4	PH404M4Q-4V	PH404M4Q-4-0A(psi)	PH404M4Q-4V-0A(psi)	350-600 psi (24.1 - 41.4 bar)
PH404M4Q-5	PH404M4Q-5V	PH404M4Q-5-0A(psi)	PH404M4Q-5V-0A(psi)	600-900 psi (41.4 - 62.0 bar)
PH404M4Q-6	PH404M4Q-6V	PH404M4Q-6-0A(psi)	PH404M4Q-6V-0A(psi)	900-1,500 psi (62.0- 103.4 bar)
PH404M4Q-7	PH404M4Q-7V	PH404M4Q-7-0A(psi)	PH404M4Q-7V-0A(psi)	1,500-3,000 psi (103.4 - 206.8 bar)
PH404M4Q-8	PH404M4Q-8V	PH404M4Q-8-0A(psi)	PH404M4Q-8V-0A(psi)	3,000-5,000 psi (206.8 - 344.7 bar)
PH404M4Q-10	PH404M4Q-10V	PH404M4Q-10-0A(psi)	PH404M4Q-10V-0A(psi)	50-100 psi (3.4 - 6.8 bar)
PH406M4Q	PH406M4Q-V	PH406M4Q-0A(psi)	PH406M4Q-V-0A(psi)	5,000-10,000 psi (344 - 689 bar)

1/4" NPT Out let MXM

Operating Pressure Ranges

Buna-N	Viton	Buna-N	Viton	Operating Pressure Ranges
PH405M4Q-1	PH405M4Q-1V	PH405M4Q-1-0A(psi)	PH405M4Q-1V-0A(psi)	100-150 psi (6.9 - 10.3 bar)
PH405M4Q-2	PH405M4Q-2V	PH405M4Q-2-0A(psi)	PH405M4Q-2V-0A(psi)	150-250 psi (10.3 - 17.2 bar)
PH405M4Q-3	PH405M4Q-3V	PH405M4Q-3-0A(psi)	PH405M4Q-3V-0A(psi)	250-350 psi (17.2 - 24.1 bar)
PH405M4Q-4	PH405M4Q-4V	PH405M4Q-4-0A(psi)	PH405M4Q-4V-0A(psi)	350-600 psi (24.1 - 41.4 bar)
PH405M4Q-5	PH405M4Q-5V	PH405M4Q-5-0A(psi)	PH405M4Q-5V-0A(psi)	600-900 psi (41.4 - 62.0 bar)
PH405M4Q-6	PH405M4Q-6V	PH405M4Q-6-0A(psi)	PH405M4Q-6V-0A(psi)	900-1,500 psi (62.0- 103.4 bar)
PH405M4Q-7	PH405M4Q-7V	PH405M4Q-7-0A(psi)	PH405M4Q-7V-0A(psi)	1,500-3,000 psi (103.4 - 206.8 bar)
PH405M4Q-8	PH405M4Q-8V	PH405M4Q-8-0A(psi)	PH405M4Q-8V-0A(psi)	3,000-5,000 psi (206.8 - 344.7 bar)
PH405M4Q-10	PH405M4Q-10V	PH405M4Q-10-0A(psi)	PH405M4Q-10V-0A(psi)	50-100 psi (3.4 - 6.8 bar)
PH407M4Q	PH407M4Q-V	PH407M4Q-0A(psi)	PH407M4Q-V-0A(psi)	5,000-10,000 psi (344 - 689 bar)

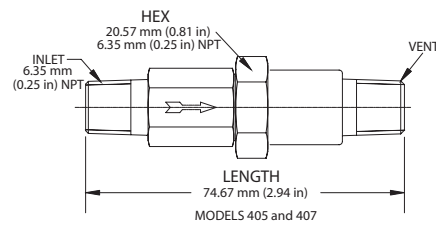
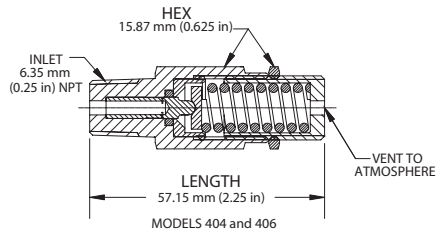


REPAIR KITS

Kit Part Number	Valve Part Number	Pressure Range (psi)	Dash #	Spring Color
PH613376- ^{1,2}	PH404M4Q PH405M4Q	50-100	-10	Purple
		100-150	-1	Violet
		150-250	-2	Black
		250-350	-3	Orange
		350-600	-4	Yellow
		600-900	-5	Pink
		900-1,500	-6	Dk Green
		1,500-3,000	-7	Dk Blue
3,000-5,000	-8	Lt Orange		
PH613374- ²	PH406M4Q PH407M4Q	5,000-10,000	N/A	Uncoated

¹ Dash number for pressure range must be included with part number

² Buna-N standard elastomer - Include "V" with part number for Viton

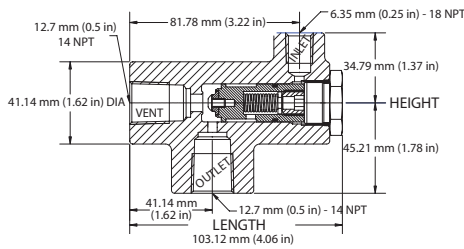




Gilmore's Pneu-Hydro Quick Vent Vales are constructed of 316 stainless steel for strength, durability and in accordance with NACE MRO175.

Features & Benefits

- Smooth, chatter-free performance
- 316 stainless steel construction
- Standard seal materials offered in Buna-N and Viton



FUNCTIONAL DESIGN SPECIFICATION

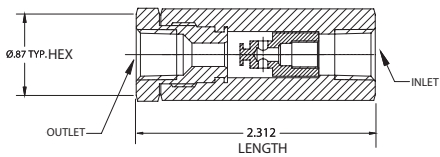
Maximum Allowable Working Pressure	10,000 psi
Connection - Inlet	1/4" NPT F
Connection - Outlet	1/2" NPT F
Connection - Vent	1/2" NPT F
Operating Temperature Range - Buna N Seals	-65° F to -180° F
Operating Temperature Range - Viton Seals	-20° F to 400° F
Cv - Supply to Function	0.8
Cv - Function to Vent	2.0

GILMORE

Part Number	Seal Type
PH433254	Buna-N
PH433254-V	Viton

STANDARD REPAIR KIT

Part Number	Seal Type
PH613254	Buna-N
PH613254-V	Viton



Gilmore’s Pneu-Hydro Excess-Flow Check Valve are designed not only to prevent fluid loss in the event of a downstream failure but will also remain closed as long as supply pressure is maintained.

Constructed of 316 stainless steel for strength, durability and in accordance with NACE MR0175. Suitable for use with liquids or gases.

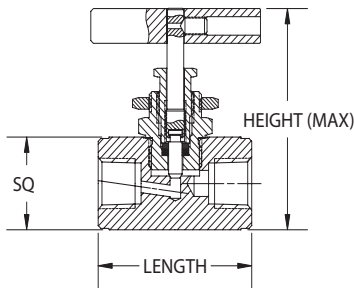
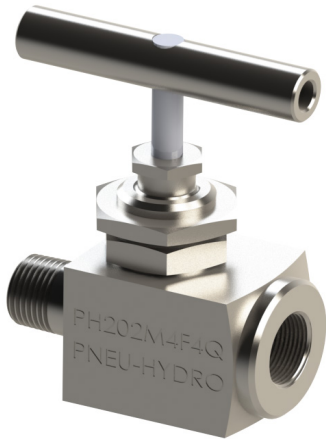
Features & Benefits

- Flow is normally permitted in both directions through the valve
- In the event of a down-stream failure causing an imbalance in pressure, the poppet will close preventing escape of fluid until system repair
- The spring will reset the poppet to its open position after the removal of supply pressure for system maintenance

FUNCTIONAL DESIGN SPECIFICATION

Operating Pressure	50 psi
Maximum allowable Working Pressure	7,500 psi
Connection - Inlet	1/4" NPT F
Connection-Outlet	1/4" NPT F
Operating Temperature Range - Viton Seals	-20° F to 400° F
Cv	0.45

GILMORE PART NUMBER	CDI PART NUMBER	SEAL TYPE
PH213677	PH213677-A	Viton



Gilmore’s Pneu-Hydro Hand Valves include many design features to improve durability and performance, while also minimizing the overall size.

A strategically placed packing below the stem threads help to ensure a durable and leakproof seal, and a self-aligning swivel pintle aids in minimizing seat scoring. A very low operating torque (less than 10 lb-inches) provides a precise ‘feel’ and adjustment sensitivity over the lifetime of the valve.

The valve stem is designed so that it cannot be inadvertently backed out of the valve, and the low profile makes this valve ideally suited for panel mounted or other limited space applications. Teflon stem seal and 316 stainless steel construction combine to provide maximum compatibility with corrosive fluids.

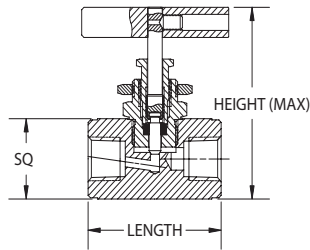
Features & Benefits

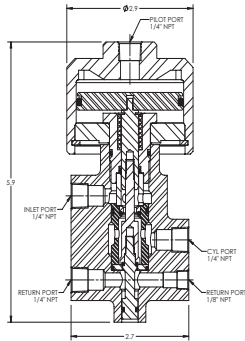
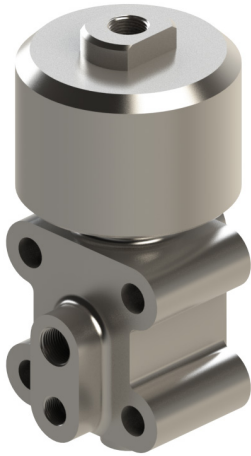
- Self-aligning swivel pintle to minimize seat scoring
- Teflon stem seal and 316 stainless steel construction to provide maximum compatibility with corrosive fluids
- Weight = approx .5 lbs

FUNCTIONAL DESIGN SPECIFICATION

Maximum Allowable Working Pressure (206)	6,000/10,000 psi @250° F, 4,000 psi @400° F
Maximum Allowable Working Pressure (202)	10,000 psi
Operating Temperature Range	-65° F to 400° F
Cv	0.26
Orifice	0.125"

GILMORE PART NUMBERS	CDI PART NUMBERS	Inlet	Outlet	Dimensions (in)		
				L	H	SQ
PH206F4Q	PH206F4Q-0A	1/4" NPTF	1/4" NPTF	1.81	2.38	0.89
PH202M4F4Q	PH202M4F4Q-0A	1/4" NPTM	1/4" NPTF	1.93	2.5	1
PH202F4Q	PH202F4Q-0A	1/4" NPTF	1/4" NPTF	1.81	2.5	1





Gilmore's Pneu-Hydro Interface Valves utilize a piston style pneumatic actuator to control a three-way two position hydraulic valve. Configured in both normally open and normally closed versions, these valves can accommodate hydraulic pressures up to 10,000 psi and pilot pressures up to 150 psi.

The unique spool valve design permits the use of a piston style actuator, eliminating the common failures and leakage associated with pilot diaphragms, while also ensuring safe and reliable operation with consistent low pilot pressure; 50 psi air pilot at 5,000 psi hydraulic, and 80 psi air pilot at 10,000 psi hydraulic.

A combination of elastomeric and metal seals ensures reliable zero leakage performance in the hydraulic power section. Failsafe closure is ensured, as both the internal spring and hydraulic pressure acting on the differential spool area provide sufficient force to effect closure should one or the other fail.

A positive indicator of operation is provided in the spool extension, which shifts to show position, and the manual override version has a turning handle located at the top center of the piston housing.

Excellent flow capacity is provided with a value of $C_v = 0.5$ or the equivalent of an orifice of 0.224 inch diameter.

Features & Benefits

- 316 stainless steel construction

PILOT FUNCTIONAL DESIGN SPECIFICATION

Control Fluid	Hydraulic or Air
Operating Pressure	50 psi air with 5,000 psi hydraulic 80 psi air with 10,000 psi hydraulic
Maximum Allowable Working Pressure	150 psi
Connection	1/4" NPT F

VALVE FUNCTIONAL DESIGN SPECIFICATION

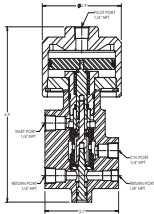
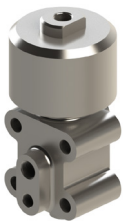
Control Fluid	Hydraulic or diesel
Maximum Allowable Working Pressure	10,000 psi
Operating Temperature Range	-65° F to -180° F, -20° F to -400° F
Flow Capacity (C_v)	0.5
Connection	1/4" NPT

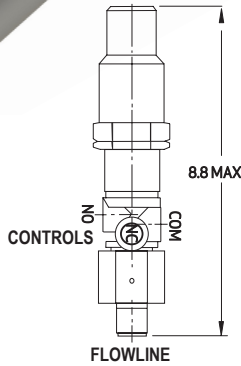
GILMORE PART NUMBER DESCRIPTION

183834-P	Valve, hydraulic interface 3-wnc 6k psi manual override
433174-P	Valve, hydraulic interface 3-wnc 6k psi
433174-PA	Valve, hydraulic interface 3-wnc 6k psi arctic
433174-PH	Valve, hydraulic interface 3-wnc 8k psi hydraulic pilot
433174-PHA	Valve, hydraulic interface 3-wnc 8k psi hydraulic pilot arctic
433242-P	Valve, hydraulic interface 3-wno 6k psi
433242-PH	Valve, hydraulic interface 3-wno 6k psi hydraulic pilot
433242-PHA	Valve, hydraulic interface 3-wno 6k psi hydraulic pilot arctic
433707-P	Valve, hydraulic interface 3-wnc 6k psi dual inlet
433707-PH	Valve, hydraulic interface 3-wnc 6k psi dual inlet arctic
434189	Valve, hydraulic interface 3-wnc 10k psi
434189-A	Valve, hydraulic interface 3-wnc 10k psi arctic

REPAIR KITS

Part Number	Valve Part Number
PH613174-P	PH433174-P
PH613174-PA	PH433174-PA
PH613174-PH	PH433174-PH
PH613174-PHA	PH433174-PHA
PH613242-P	PH433242-P
PH613242-PH	PH433242-PH
PH613707-P	PH433707-P
PH613707-PH	PH433707-PH
PH613834-P	PH183834-P
PH614189	PH434189



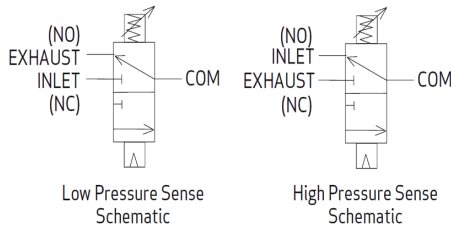


Gilmore’s Pneu-Hydro HL-2 High-Low Pilot Valves rely on flowline pressure to pilot an adjustable control valve. Capable of functioning as either normally open or normally closed, these 3-way control valves are intended to initiate a shutdown when flowline pressure is sensed to exceed a low or high setpoint.

Available in various pressure/temperature ranges up to 10,000 psi, additional materials available upon request, these valves are compatible with a wide range of flowline fluids, and can be safely used in both hydraulic and pneumatic control systems.

Features & Benefits

- Wide series of available pressure and temperature ranges
- Smooth, chatter-free performance
- Reliable and repeatable cracking and reseating pressures
- 316 stainless steel construction
- Repeatability of set point = 1% of full range max low set point repeatability
- Dead Band = 10% of full range max approximately
- Weight = Approx 2.8 lbs



FUNCTIONAL DESIGN SPECIFICATION

Control Fluid	Hydraulic or Air
Maximum Allowable Working Pressure - Flowline	10,000 psi
Maximum Allowable Working Pressure - Controls	150 psi
Operating Temperature Standard Service Range	-20° F to 210° F
Operating Temperature Arctic Service Range (-A)	-65° F to 180° F

TABLE A: SET PRESSURE TOLERANCES

Setting (psi)	Tolerance
1000+	±5% of set pressure
500-999	±50
250-499	±25
0-249	±10

TABLE B: RESEAT PRESSURE TOLERANCES

Setting (psi)	Tolerance
1000+	90%
250-999	80%
0-249	50%

Pressure setting accuracy is determined by the value of the pressure setting. Please see Table A for details. EXAMPLE: A set of valves ordered at 950 psi would all be set to open between 900 psi and 1000 psi, targeting 950psi.

Reseat pressure is determined by the set pressure of the valve. Please see Table B for more details. EXAMPLE: A set of valves ordered with a set pressure of 1500 psi will be tested to verify that they all reseat at or above 1350 psi, 90% of 1500.

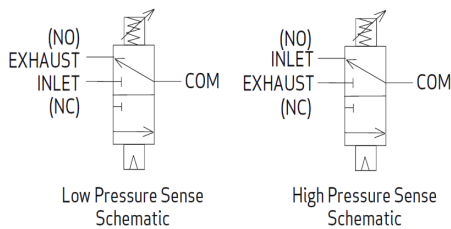
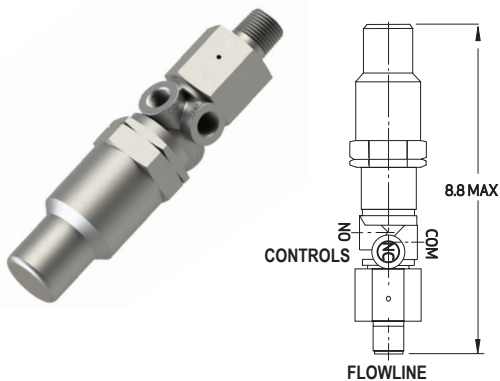
GILMORE PART NUMBER	CDI PART NUMBER	ARTIC SERVICE PART NUMBER	Pressure Range
Buna-N	Buna-N		
PH433730	PH433730-X-0A(psi)	PH433730	3 - 6 psi (.2 - .4 bar)
PH433741	PH433741-X-0A(psi)	PH433741	5 - 50 psi (.34 - 3.4 bar)
PH433742	PH433742-X-0A(psi)	PH433742	30 - 115 psi (2.1 - 7.9 bar)
PH433743	PH433743-X-0A(psi)	PH433743	1,000 - 5,000 psi (68.9 - 344.7 bar)
PH433744	PH433744-X-0A(psi)	PH433744	100 - 1,000 psi (6.9 - 68.9 bar)
PH433745	PH433745-X-0A(psi)	PH433745	500 - 1,500 psi (34.5 - 103.4 bar)
PH433746	PH433746-X-0A(psi)	PH433746	1,500 - 3,500 psi (103.4 - 241.3 bar)
PH433747	PH433747-X-0A(psi)	PH433747	2,500 - 10,000 psi (172.3 - 689.4 bar)

*X refers to setting at Falling (LOW) or Rising (HIGH) pressurization.

Examples: **PH433742 set @ 73psi (Falling) Low**, Gilmore: PH433742, CDI: PH433742-L-0A73; **PH433744 set @ 200psi (Rising) High**, Gilmore: PH433744, CDI: PH433744-H-0A200.
 (For Artic Service add "-A" at the end of the assembly requirement. Example: PH433730-A)

REPAIR KITS

Repair Kit Part Number	Valve Part Number
PH613730	PH433730
PH613741	PH433741
PH613742	PH433742
PH613743	PH433743
PH613744	PH433744
PH613745	PH433745
PH613746	PH433746
PH613747	PH433747



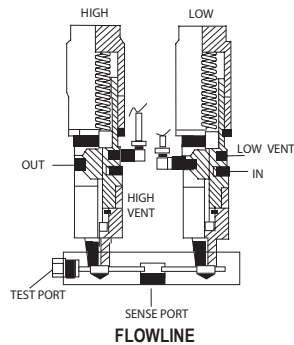


Gilmore's Pneu-Hydro High-Low Manifold Pilot Valve Assembly combines two HL-2 pilot valves into a compact manifold assembly to provide reliable monitoring of flowline pressure. Using select combination of two HL-2 valves, limit pressures can be set to any range between 5 and 10,000 psi.

Through a common flowline pressure sensed in the manifold, the HL-2 valves can be set to block and bleed the control fluid or switch to open the control source when pressures are detected to be beyond a low or high pressure set point.

Features & Benefits

- Wide series of available pressure and temperature ranges
- Smooth, chatter-free performance
- Reliable and repeatable cracking and reseating pressures
- 316 stainless steel construction



FUNCTIONAL DESIGN SPECIFICATION

Control Fluid	Hydraulic or Air
Maximum Allowable Working Pressure - Flowline	10,000 psi
Maximum Allowable Working Pressure - Controls	150 psi
Operating Temperature Standard Service Range	-20° F to 210° F
Operating Temperature Arctic Service Range (-A)	-65° F to 180° F

PORT CONNECTIONS

Sense Port	1/2" NPT
Pilot Ports	1/4" NPT
Test Ports	1/2" NPT

TABLE A: SET PRESSURE TOLERANCES

Setting (psi)	Tolerance
1000+	±5% of set pressure
500-999	±50
250-499	±25
0-249	±10

TABLE B: RESEAT PRESSURE TOLERANCES

Setting (psi)	Tolerance
1000+	90%
250-999	80%
0-249	50%

"Pressure setting accuracy is determined by the value of the pressure setting. Please see Table A for details. EXAMPLE: A set of valves ordered at 950 psi would all be set to open between 900 psi and 1000 psi, targeting 950psi"

"Reseat pressure is determined by the set pressure of the valve. Please see Table B for more details. EXAMPLE: A set of valves ordered with a set pressure of 1500 psi will be tested to verify that they all reseat at or above 1350 psi, 90% of 1500"

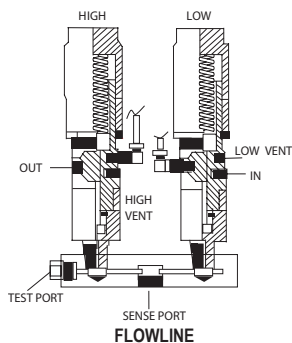
Section	Maximum Pressure	Part Number	Pressure Range	High pilot digits 1&2	Low pilots digits 3&4
A	1,500 psi	PH433741	5 - 50 psi (.3 - 3.4 bar)*	01	01
	1,500 psi	PH433742	30 - 115 psi (2.0 - 7.9 bar)*	02	02
	10,000 psi	PH433744	100 - 1,000 psi (6.9 - 68.9 bar)	03	03
	10,000 psi	PH433745	500 - 1,500 psi (34.4 - 103.4 bar)	04	04
	10,000 psi	PH433746	1,000 - 5,000 psi (68.9 - 344.7 bar)	05	05
	10,000 psi	PH433743	1,500 - 3,500 psi (103.4 - 241.3 bar)	06	06
B	10,000 psi	PH433730	3,000 - 6,000 psi (206.8 - 413.7 bar)	07	07
	10,000 psi	PH433747	5,000 - 10,000 psi (344.7 - 689.5 bar)	08	08

High-Low Pilot Manifold Assemblies are ordered under a nine-digit part number starting with PH876-63-, followed with digits 1&2, and 3&4 from the table above. For optimal performance, both the high range and low range valves shall be selected from the same section in the table above.

Example: P/N PH876-63-0503 (high set range 1,500 - 3,000 psi; low set range 100 - 1,500 psi (For Artic Service add "-A" at the end of the assembly requirement. Example: PH876-63-0301-A)

GILMORE PART NUMBER	CDI PART NUMBER	DESCRIPTION
PH876-63-0301	PH876-63-0301-(psi)-(psi)	100-1,000 PSI, 5-50 PSI, CF8M, Max Rati
PH876-63-0302	PH876-63-0302-(psi)-(psi)	100-1,000 PSI, 30-115 PSI, CF8M, Max Ra
PH876-63-0303	PH876-63-0303-(psi)-(psi)	100-1,000 PSI, 100-1,000 PSI, CF8M, Ma
PH876-63-0402	PH876-63-0402-(psi)-(psi)	500-1,500 PSI, 30-115 PSI, CF8M, Max R
PH876-63-0403	PH876-63-0403-(psi)-(psi)	500-1,500 PSI, 100-1,000 PSI, CF8M, Ma
PH876-63-0502	PH876-63-0502-(psi)-(psi)	500-3,500 PSI, 30-115 PSI, CF8M, Max
PH876-63-0503	PH876-63-0503-(psi)-(psi)	1,500-3,500 PSI, 100-1,000 PSI, CF8M
PH876-63-0504	PH876-63-0504-(psi)-(psi)	1,500-3,500 PSI, 500-1,500 PSI, CF8M
PH876-63-0603	PH876-63-0603-(psi)-(psi)	1,000-5,000 PSI, 100-1,000 PSI, CF8M
PH876-63-0606	PH876-63-0606-(psi)-(psi)	1,000-5,000 PSI, 1,000-5,000 PSI, CF8M
PH876-63-0806	PH876-63-0806-(psi)-(psi)	5,000-10,000 PSI, 1,000-5,000 PSI, CF8
PH876-63-0808	PH876-63-0808-(psi)-(psi)	5,000-10,000 PSI, 5,000-10,000 PSI, CF

* Artic, Inconel, Monel, Hastelloy applications available



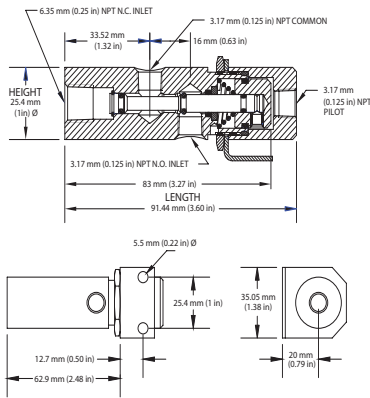


Gilmore's Pneu-Hydro Pneumatic Control Valves provide control over two pneumatic sources to a single function. With manual or piloted control, these versatile and robust valves provide reliable, bubble-tight sealing for a wide range of applications.

Options for line, panel or bracket mounting configurations provide a solution for almost all installations.

Features & Benefits

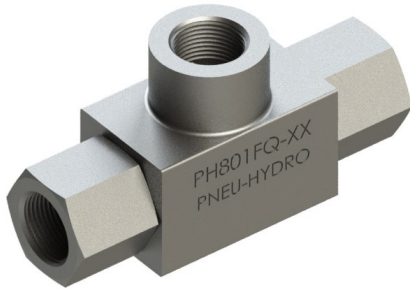
- 316 stainless steel construction
- Compact design



FUNCTIONAL DESIGN SPECIFICATION

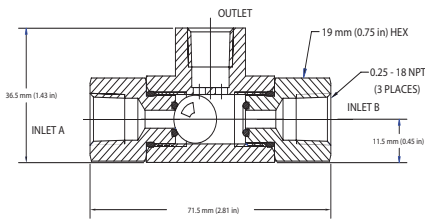
Control Fluid	Air
Maximum Allowable Working Pressure	250 psi
Cv	.40
Operating Temperature Range	-20° F to -400° F

GILMORE PART NUMBERS	CDI PART NUMBERS	DESCRIPTION	REPAIR KIT PART NUMBER
PH183552	PH183552	Panel Mounted, pushbutton	PH613612
PH183554	PH183554	Bracket Mounted, pushbutton	PH613612
PH183612	PH183612	Line Mounted, pushbutton	PH613612
PH433553	PH433553	Bracket Mounted, pilot operated	PH613612
PH433555	PH433555	Line Mounted, pilot operated	PH613612
PH434150	PH434150	Panel Mounted, pilot operated	PH614150



Gilmore’s Pneu-Hydro Shuttle Valves provide reliable passive switching for control systems with multiple and/or redundant supply sources.

The simple yet durable ball valve design eliminates breakaway friction, common with sliding seal designs, allowing the valves to switch sources with very low differential pressure. Primarily used in pneumatic control systems, these shuttle valves will also operate in low pressure hydraulic systems.



Features & Benefits

- 316 stainless steel construction
- Standard seal materials are Buna-N
- Viton or other elastomers are available to meet specific requirements

FUNCTIONAL DESIGN SPECIFICATION

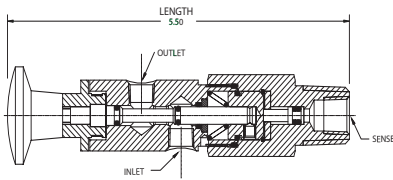
Control Fluid	Hydraulic or Air
Maximum Allowable Working Pressure	250 psi
Cv	.40
Operating Temperature Range - Buna-N	-65° F to -180° F
Operating Temperature Range - Viton	-20° F to -400° F

GILMORE PART NUMBERS

Buna	Viton
PH801F4Q	PH801F4Q-V

REPAIR KITS

Repair Kit Part Number	Valve Part Number
PH613258-1	PH801F4Q
PH613258-2	PH801F4Q-V



Gilmore’s Pneu-Hydro Sand Probe Valves are designed to monitor the erosive effects of abrasive fluid on flowline systems.

A carefully designed sensing probe extends into the flow path, providing a hydraulic pilot signal to the Sand Probe Valve. Once a predetermined amount of erosion opens a hydraulic communication path within the probe, the normally open valve shifts to block and bleed pneumatic control pressure, providing a signal suitable to close a flowline valve, trigger an alarm, or initiate a shutdown.

The sensing pilot is designed with a 1/2” NPT male thread for attachment to the flowline. Within this connection, is another 1/4” NPT female connection for the tubular probe. With this arrangement, probes can be readily fabricated and installed in the field from standard fittings and tubing.

Features & Benefits

Wide pressure range: This device may be safely operated in flowlines containing pressures in the range of 25 - 10,000 psi (1.72 - 689.47 bar)

Control pressure range: The pilot handles a control system pressure of 20 - 250 psi (1.37 - 17.23 bar)

Visual indicator: When the probe has been cut and the pilot spool shifts, the palm button and red band on the main spool indicate that the pilot has been activated

Manual Control: The palm button on the pilot may be used at any time to cycle the valve and test the system

Simplicity: When the probe has been cut by abrasive action of the flowing product, the pressure in the pipeline shifts the pilot spool

Choice of probes: Standard wall probes are available in thicknesses of 0.028; 0.035; 0.049 and 0.065 inches. Standard length probes are 6, 10 and 14 inches

FUNCTIONAL DESIGN SPECIFICATION

Control Fluid	Air
Maximum Allowable Working Pressure - Flowline	10,000 psi
Maximum Allowable Working Pressure - Controls	250 psi
Operating Temperature Range	-70° F to -400° F

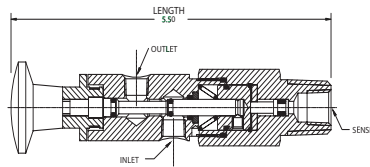
GILMORE PART NUMBER*	MAXIMUM OPERATING PRESSURE RANGES	REPAIR KIT PART NUMBER
PH434051	30 - 250 psi (2.07 - 17 bar)	PH614051
PH434052	250 - 10,000 psi (17 bar - 689 bar)	PH614052
PH434062		PH614062

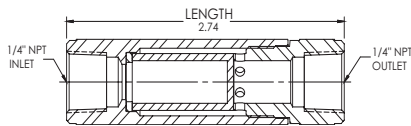
*Valves and probes are ordered separately. Model numbers above do not include probes.

PROBE KIT PART NUMBERS

Prob Length* (inches)	Probe Wall Thickness (inches)*			
	0.028	0.035	0.049	0.065
6	08-03756-01	08-03756-02	08-03756-03	08-03756-04
10	08-03756-07	08-03756-08	08-03756-09	08-03756-10
14	08-03756-11	08-03756-12	08-03756-13	08-03756-14

*Select the probe length and thickness from the probe kit chart above.





Gilmore’s Pneu-Hydro Inline Filters uses a minimum number of parts for economy and reliability.

These filters are designed to use a strong, durable element, with a large surface area that reduces the need for frequent cleaning or replacement. A unique assembly retains the filter element solidly, preventing flutter; yet it is easily removed for cleaning or replacement. It will not contribute to system pulsation. A variety of filtration ranges are available.

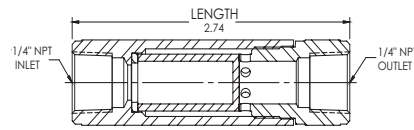
Features & Benefits

- 316 stainless steel construction
- Teflon gasket
- Permit use with a wide variety of corrosive fluids

FUNCTIONAL DESIGN SPECIFICATION

Working Fluid	Hydraulic
Maximum Allowable Working Pressure	6,000 psi
Operating Temperature Range	-65° F to 400° F
Inlet	1/4" NPT
Outlet	1/4" NPT

GILMORE PART NUMBERS	CDI PART NUMBERS	FILTRATION SIZE (µm)	REPAIR KIT (Element + Gasket)
PH511F4Q-2	PH511F4Q-2-A	2	PH613511-2
PH511F4Q-5	PH511F4Q-5-A	5	PH613511-5
PH511F4Q-20	PH511F4Q-20-A	20	PH613511-10
PH511F4Q-40	PH511F4Q-40-A	40	PH613511-20
PH511F4Q-50	PH511F4Q-50-A	50	PH613511-40
PH511F4Q-100	PH511F4Q-100-A	100	PH613511-100



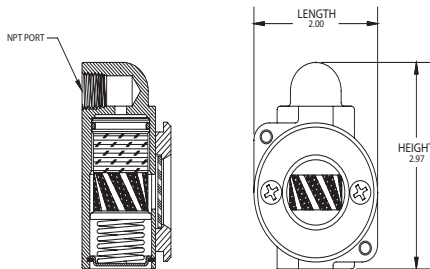


Gilmore’s Pneu-Hydro Pressure Indicator offers easy to read visual notification of the presence or absence of pneumatic pressure in a control circuit.

When pressure rises to approximately 1 bar (14 psi), a solid green band shows through the window. If the pressure drops below 0.5 bar (8 psi), a red and white striped band appears. The colors are reflective for visibility in lighted surroundings. The striped section provides added recognition of system status under dimly lit conditions or when color cannot be distinguished.

Features & Benefits

- The unit mounts through a 1.75 in. diameter hole and in panels from 17 gauge to 0.18 in. thick
- The indicator is constructed of 316 stainless steel and satisfies NACE MRO175 standard



FUNCTIONAL DESIGN SPECIFICATION

Working Fluid	Air
Maximum Allowable Working Pressure	250 psi

Operating Temperature Ranges

Buna-N Seals	Viton Seals	Ethylene Propylene Seals
-65° F to -180° F	-20° F to 400° F	-65° F to 300° F

**GILMORE PART NUMBER
1/8" NPT(F) Connection**

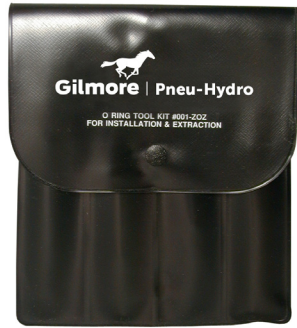
Buna-N	Arctic	Ethylene Propylene	Viton	Ethylene Propylene
PH433774	PH433774-A Arctic Service, -65° F	PH433774-EPDM 14 Bar, Proof 34 Bar	PH433774-RI Reverse Indication	PH433774-RI-EPDM 14 Bar, Proof 34 Bar

**GILMORE PART NUMBER
1/4" FNPT Connection**

Buna-N	Arctic	Ethylene Propylene
PH433775	PH433775-A Arctic Service, -65° F	PH433775-EPDM


STANDARD REPAIR KIT

Buna-N	Ethylene Propylene	Viton
PH613774-A	PH613774-EPDM	PH6613774



316 STAINLESS STEEL TOOLS

Part Number	Description
PH001-Z02	Pointed prying tool
	Piercing tool
	Tweezers
	Jogging/prying tool
	Prodding/removal tool
	Vinyl pouch
	Instruction sheet



Gilmore
1231 Lumpkin Road
Houston, TX 77043
+1 713 468 8778

INFO@gilmore.com
www.gilmore.com